

# ACTIVITIES

## BIKING AND HIKING

- DOG WALKING**
- Cotton Brook C2-D2
  - Dumont Meadow C2
  - Kirchner Woods C3
  - Mayo Farm Quiet Path C3
  - Ranch Valley B2
  - Waterbury Community Path A2
  - Wiessner Woods B2

## HIKING / WALKING

- Adams Camp B2
- Bingham Falls B2
- Cotton Brook C2-D2
- Dumont Meadow C2
- Green Mountain Club E2
- Hope Davey Park E3
- Kirchner Woods C3
- Little River State Park C2
- Long Trail A2-D1
- Mayo Farm Quiet Path C3
- Moss Glen Falls B4
- Mount Hunger C3
- Perry Hill F2
- Pinnacle Meadow D3
- Ranch Valley B1-B2
- Sterling Forest A2
- Sterling Falls Gorge A2
- Stowe Mountain Resort B2
- Stowe Pinnacle D3
- Stowe Recreation Path B2-C3
- Sunset Rock C3
- Waterbury Center St. Pk. (ADA) E2
- Waterbury Community Path F2
- Wiessner Woods B2

## HORSEBACK RIDING

- Cotton Brook C2-D2
- Edson Hill Manor (\$) B2
- Topnotch Resort (\$) B2

## MOUNTAIN BIKING

- Cotton Brook C2-D2
- Cady Hill Forest C3
- Dumont Meadow C3
- Kirchner Woods C2
- Perry Hill F2
- Sterling Forest A2
- Trapp Family Lodge (\$) C2

## PLAYGROUNDS

- Hope Davey Park E3
- Memorial Park C3
- Rusty Parker Park F2
- Thatcher Brook School F2

## RECREATIONAL PROGRAMS

- Anderson Recreation Field F2
- Memorial Park / Gale Rec Center C3

## SPORT

- ARCHERY / SHOOTING**
- Waterbury Stowe Fish & Game Club (\$) D2

## BALL FIELDS

- Anderson Recreation Field F2
- Dascomb Rowe Field F2
- Hope Davey Park E3
- Mayo Farm C3
- Memorial Park C3
- Moscow Recreation Field C2
- Stowe High School C2

## BASKETBALL

- Anderson Recreation Field F2
- Memorial Park C3
- Stowe High School C2

## DISC GOLF

- Hope Davey Park E3

## GOLF

- Blush Hill Country Club (\$) E2
- Country Club of Vermont (\$) E2
- Stowe Country Club (\$) C3
- Stowe Mountain Club (\$) B2
- Stoweflake Resort (\$) C3

## MINIATURE GOLF

- Sun & Ski C3

## IN-LINE SKATING

- Stowe Recreation Path B2-C3

## SKATE BOARDING

- Hope Davey Park E3

## TENNIS

- Anderson Recreation Field F2
- Inn at the Mountain (\$) B2
- Memorial Park C3
- Stowe High School C2
- Stoweflake Resort (\$) C3
- Topnotch Resort (\$) B2

## WATER

### BOATING & PADDLING

- Waterbury Reservoir D2-E2
- Winooski River E1-F2

### FISHING (PERMIT REQUIRED)

- Little River C3-D2
- Ranch Brook B1-B2
- Waterbury Reservoir D2-E2
- West Branch River A1-C3
- Winooski River E1-F2

### SWIMMING

- Bingham Falls B2
- Chase Park C2
- Little River C3-D2
- Moss Glen Falls B4
- Sterling Falls Gorge A2
- Waterbury Reservoir D2-E2
- Waterbury Swimming Pool F2
- West Branch River A1-C3

### WATER SKIING

- Waterbury Reservoir D2-E2

## WINTER

### BACKCOUNTRY SKIING & SNOWSHOEING

- UNGROOMED TRAILS**
- Adams Camp B2
  - Cady Hill Forest C3
  - Catamount Trail D1-B4
  - Cotton Brook C2-D2
  - Kirchner Woods C3
  - Little River State Park E2
  - Long Trail A2-D1
  - Pinnacle Meadow D4
  - Smugglers' Notch A1
  - Sterling Forest A2
  - VAST Trail System A2
  - Wiessner Woods B2

### CROSS COUNTRY SKIING & SNOWSHOEING

- GROOMED / MAINTAINED TRAILS**
- Edson Hill Manor (\$) B2
  - Mayo Farm B2
  - Stoweflake Resort (\$) C3
  - Stowe Mountain Resort (\$) B2-C3
  - Stowe Recreation Path B2-C3
  - Topnotch Resort (\$) B2
  - Trapp Family Lodge (\$) C2

### SKIING/SNOWBOARDING

- Stowe Mountain Resort (\$) A2

### ICE SKATING

- Anderson Recreation Field F2
- The Ice Center (\$) F2
- Stowe Arena (\$) C3

### SLEIGH & CARRIAGE RIDES

- Stowehof Inn (\$) B2
- Topnotch Resort (\$) B2
- Trapp Family Lodge (\$) C2

### SNOWMOBILING

- Cotton Brook (parking) E3
- Little River State Park (parking) E2
- Mayo Farm (parking) C3
- Sterling Forest (parking) A2
- VAST Trail System A2

### CAMPING

- Little River State Park (\$) E2
- Gold Brook Campground (RV's, \$) C3
- Smugglers' Notch State Park (\$) B2

### PICNICKING

- Chase Park C2
- Hope Davey Park E3
- Mayo Farm C3
- Memorial Park C3
- Newton Baker Park F2
- Rusty Parker Park F2
- Sunset Rock C3
- Thompson Park C2

### HUNTING (LICENSE REQUIRED)

Hunting is permitted in season on all public lands and many other conserved properties. Contact Vermont Dept. of Fish and Wildlife for information. [vtfishandwildlife.com](http://vtfishandwildlife.com)

### THE GREEN MOUNTAIN STATE

Vermont not only takes its nickname, "The Green Mountain State", from the surrounding mountains, it is named after them. The French words Vert and Mont are literally translated as Green Mountain.

# LOCATIONS

## ADAMS CAMP B2

Parking available on Ranch Brook Rd. or Haul Rd.  
Backcountry Skiing, Hiking, Mountain Biking, Snowshoeing

## ANDERSON REC FIELD F2

Ball Fields, Basketball, Ice Skating, Recreation Programs, Tennis

## BINGHAM FALLS B2

Series of cascades culminating in a 50 foot drop into a popular swimming hole. Please be mindful of safety.  
Hiking, Swimming

## BLUSH HILL BOAT ACCESS E2

Access to Waterbury Reservoir.  
Boating, Fishing, Swimming

## CADY HILL FOREST C3 INSET

Network of hiking and mountain bike trails. Access from parking area along Mountain Rd. (Route 108).  
Back Country Skiing, Hiking, Mountain Biking, Snowshoeing

## CATAMOUNT TRAIL B4-D1

Ski trail traverses Vermont along the Green Mountains. Access from Sterling Forest or Nebraska Valley Rd.  
Backcountry Skiing

## CHASE PARK C2

Stowe Recreation Path parking and access to West Branch River.  
Fishing, Picnicking, Swimming

## COTTON BROOK C2-D2

Leave the crowds behind and explore the edges of Waterbury Reservoir.  
Canoe Access, Backcountry Skiing, Dog Walking, Hiking, Horseback Riding, Mountain Biking, Snowmobiling

## CROSS VERMONT TRAIL F2

Provides access to Winooski River.  
Dog Walking, Fishing, Walking

## DASCOMB ROWE FIELD F2

Waterbury Village recreation area.  
Ball Fields, Canoe Access, Fishing, Walking

## DUMONT MEADOW F2

Access to this meadow is via Alex's Trail. Park at the end of Adams Mill Rd.  
Hiking, Mountain Biking, Snowshoeing

## EDSON HILL MANOR B2

Cross Country Skiing, Horseback Riding (\$)

## GREEN MOUNTAIN CLUB D3

Snowshoeing, Visitor Center, Walking

## HOPE DAVEY PARK E2

Community park in quaint village of Waterbury Center.  
Ball Fields, Disc Golf, Hiking, Picnicking, Playground, Skateboarding

## HUNGER MOUNTAIN D3

Four hour round trip hike. Panoramic view of the area at summit.  
Hiking, Snowshoeing, Views

## THE ICE CENTER F2

Ball Fields, Ice Skating (\$)

## INN AT THE MOUNTAIN B2

Tennis (\$)

## KIRCHNER WOODS C3

Back Country Skiing, Hiking, Mountain Biking, Snowshoeing

## LITTLE RIVER C3-E2

Fishing, Swimming, Tubing

## LITTLE RIVER STATE PARK E2

Accesses Waterbury Reservoir. Swimming beaches, play areas, boat launch, rentals, and fishing. Access via VT Route 2 to Little River Rd. (\$) Boating, Camping, Fishing, Hiking, Paddling, Swimming (\$)

## LONG TRAIL A2-D1

Hiking trail traverses Vermont along the Green Mountains. Access from Nebraska Valley Rd. or Smugglers' Notch.  
Hiking, Snowshoeing

## MAYO FARM C3 INSET

Multi-use town-owned property.  
Ball Fields, Cross Country Skiing, Dog Walking, Fishing,

Hiking, Picnicking, Snowmobiling, Snowshoeing, Swimming, Walking

## MEMORIAL PARK / GALE REC CENTER / STOWE ARENA C3 INSET

Stowe village's recreation hub.  
Ball Fields, Basketball, Ice Skating, Recreation Programs, Playground, Recreation Programs, Sledding, Tennis

## MOSCOW REC FIELD C2

Ball Field, Fishing, Swimming

## MOSS GLEN FALLS B4

Beautiful waterfalls and cascades. Please be mindful of safety.  
Hiking, Swimming

## PERRY HILL F2

Technically oriented mountain biking. For info, check with a local bike shop.  
Hiking, Mountain Biking

## PINNACLE MEADOW C3

High alpine meadow with access to Stowe Pinnacle.  
Hiking, Snowshoeing

## QUIET PATH C3 INSET

Quiet easy walking and running. Panoramic views, access to the West Branch River and interpretive signs.  
Dog Walking, Snowshoeing, Swimming, Walking

## RANCH VALLEY B2

The birthplace of skiing in Stowe. In 1932 Craig Burt renovated his lumber camp (Ranch Camp) for skiers.  
Dog Walking, Fishing, Hiking

## RIVER WALK C3 INSET

Biking, Walking

## RUSTY PARKER PARK F2

Community park in the center of Waterbury Village. Cultural events and farmers markets. Adjacent to the historic train station.  
Picnicking, Playground

## SMUGGLERS' NOTCH STATE PARK B2

Corridor State Park along Rte. 108.  
Camping (\$), Hiking, Picnicking

## SMUGGLERS' NOTCH SCENIC HIGHWAY A1

Scenic drive or hike through a high mountain pass. Snowshoe and backcountry ski in winter. Closed to vehicular traffic during winter.  
Backcountry Skiing, Hiking, Scenic Drive, Snowshoeing

## STERLING FALLS GORGE A2

Falls, cascades and pools are carved deep into colorful curvaceous rocks. Surrounded by old growth trees and vibrant plants and shrubs.  
Hiking, Swimming

## STERLING FOREST A2 INSET

Stowe's town forest. Back country recreation and managed silviculture. The mountain bike trails are for intermediate and advanced riders.  
Backcountry Skiing, Hiking, Mountain Biking, Snowmobiling (VAST), Snowshoeing

## STOWE COUNTRY CLUB C3

Golf, Driving Range (\$)

## STOWE HIGH SCHOOL C2

Ball Fields, Basketball, Tennis, Running Track

## STOWE MOUNTAIN RESORTA1

Four season ski resort with adventure park, and gondola ride.  
Cross Country Skiing, Golf, Hiking, Skiing, Snowboarding (\$)

## STOWE MOUNTAIN RESORT SKI TOURING CENTER B2

Cross Country Skiing, Snowshoeing (\$)

## STOWE PINNACLE D3

Vigorous two hour round trip hike with panoramic view at the summit.  
Hiking, Snowshoeing, Views

## STOWE REC PATH B2-C3

Multi-use recreation path. Parking available behind Stowe Community Church, Chase Park, Thompson Park and Brook Rd.

Biking, Cross Country Skiing, Snowshoeing, In-line Skating, Jogging, Walking

## STOWEFLAKE RESORT C3

Cross Country Skiing, Golf, Tennis (\$)

## STOWEHOF INN B2

Sleigh Rides, Tennis (\$)

## SUN & SKI C3

Miniature Golf (\$)

## SUNSET ROCK C3 INSET

Short, steep hike from Stowe Village. Trail starts at the end of Sunset St. Don't miss the view at 200 yards looking on to Main St. or from summit.  
Hiking, Picnicking, Views

## THOMPSON PARK B2

Stowe Recreation Path parking, access to West Branch River and seasonal corn maze on Bouchard Farm.  
Fishing, Picnicking, Swimming

## TOLL ROAD A1-B2

Drive to the summit of Mt. Mansfield. Scenic Drive, Views (seasonal) (\$)

## TOPNOTCH RESORT B2

Cross Country Skiing, Sleigh Rides, Horseback Riding, Tennis (\$)

## TRAPP FAMILY LODGE C2

Cross Country Skiing, Mountain Biking, Sleigh Rides, Snowshoeing (\$)

## VAST TRAILS

Vermont Association of Snow Travelers maintains an extensive statewide trail network. Membership required for snowmobile use.  
Backcountry Skiing (free), Snowmobiling (\$)

## WATERBURY CENTER STATE PARK E2

Accesses Waterbury Reservoir. Located on a 90 acre peninsula with beach, picnic tables, grills, nature trail, boat launch and rentals.  
ADA Trail, Fishing, Hiking, Paddling, Picnicking, Swimming (\$)

## WATERBURY COMMUNITY PATH F2

Community walking path runs along Thatcher Brook.  
Hiking, Walking

## WATERBURY RESERVOIR D2-E2

Boating, Fishing, Paddling, Swimming, Water Skiing

## WATERBURY STOWE FISH & GAME CLUB D2

Archery, Shooting (\$)

## WATERBURY SWIMMING POOL F2

Swimming

## WEST BRANCH RIVER A1-C3

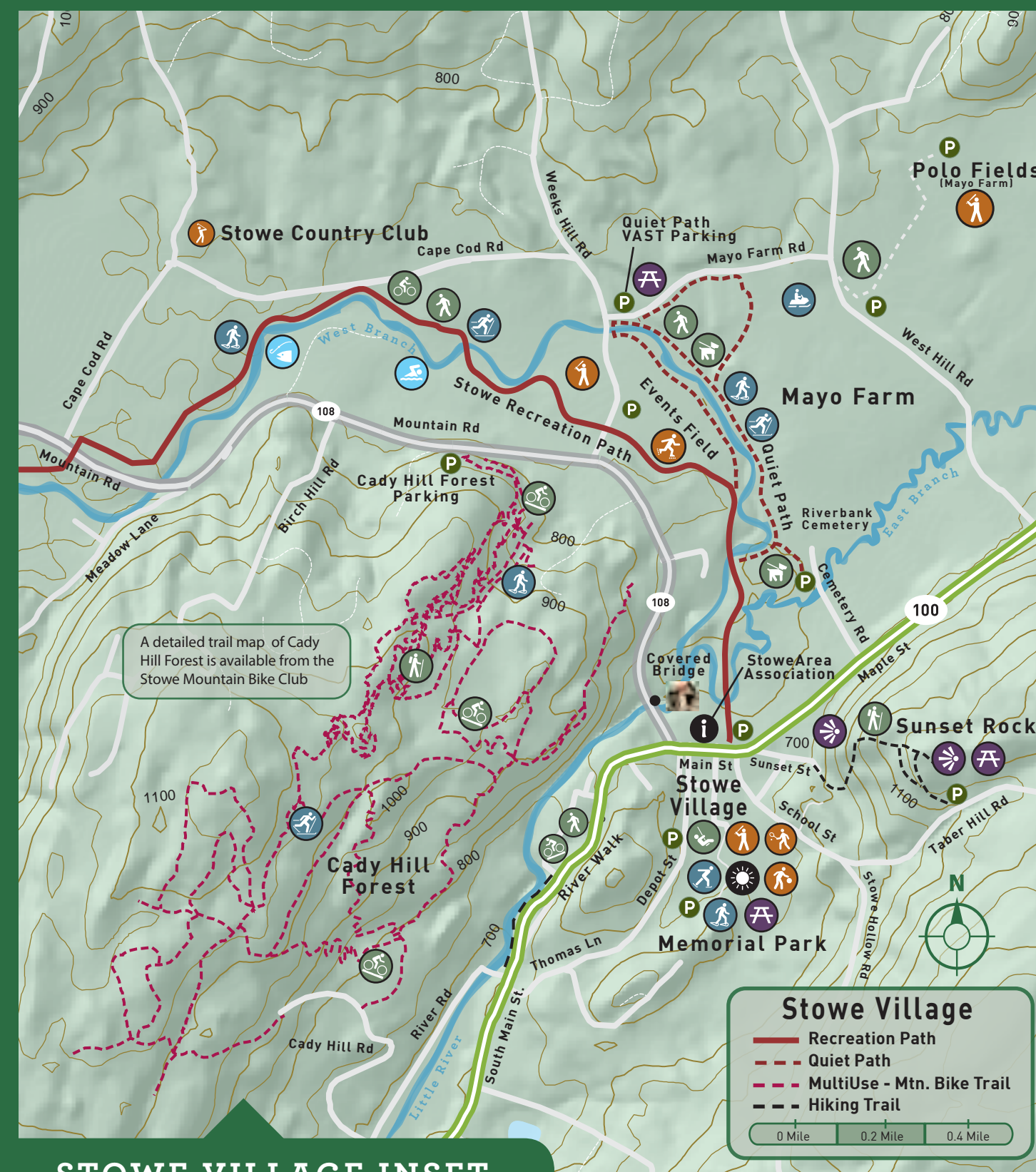
Fishing, Swimming

## WIESSNER WOODS B2

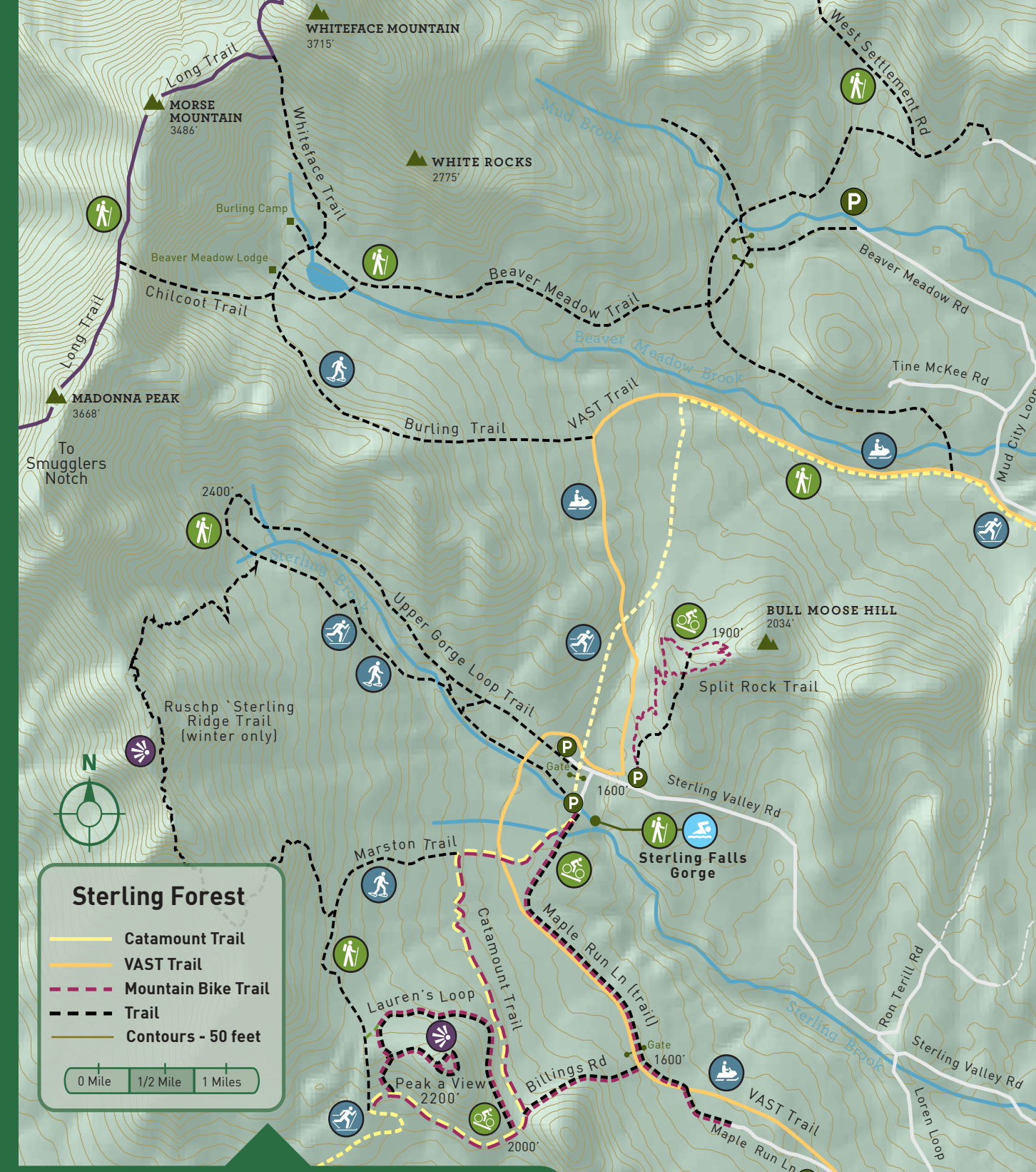
Conserved woodlands crisscrossed by streams with easy hiking trails.  
Back-country Skiing, Dog Walking, Hiking, Snowshoeing

## WINOOSKI RIVER E1-F2

Access via Dascomb Rowe Field.  
Fishing, Paddling, Swimming



STOWE VILLAGE INSET



STERLING FOREST INSET

# Green Mountain Byway Recreation Guide & Map

The Green Mountain Byway runs through Waterbury and Stowe Vermont, comprising an area considered to be the heart of the Green Mountains and Vermont's premier four-season recreation destination.

Outdoor recreational activities and locations are depicted on the map and cross referenced in easy to use tables. Inset maps for Stowe Village and Sterling Forest provide additional detail. Some activities require a fee.

Additional information about area recreational opportunities is available from the following resources.

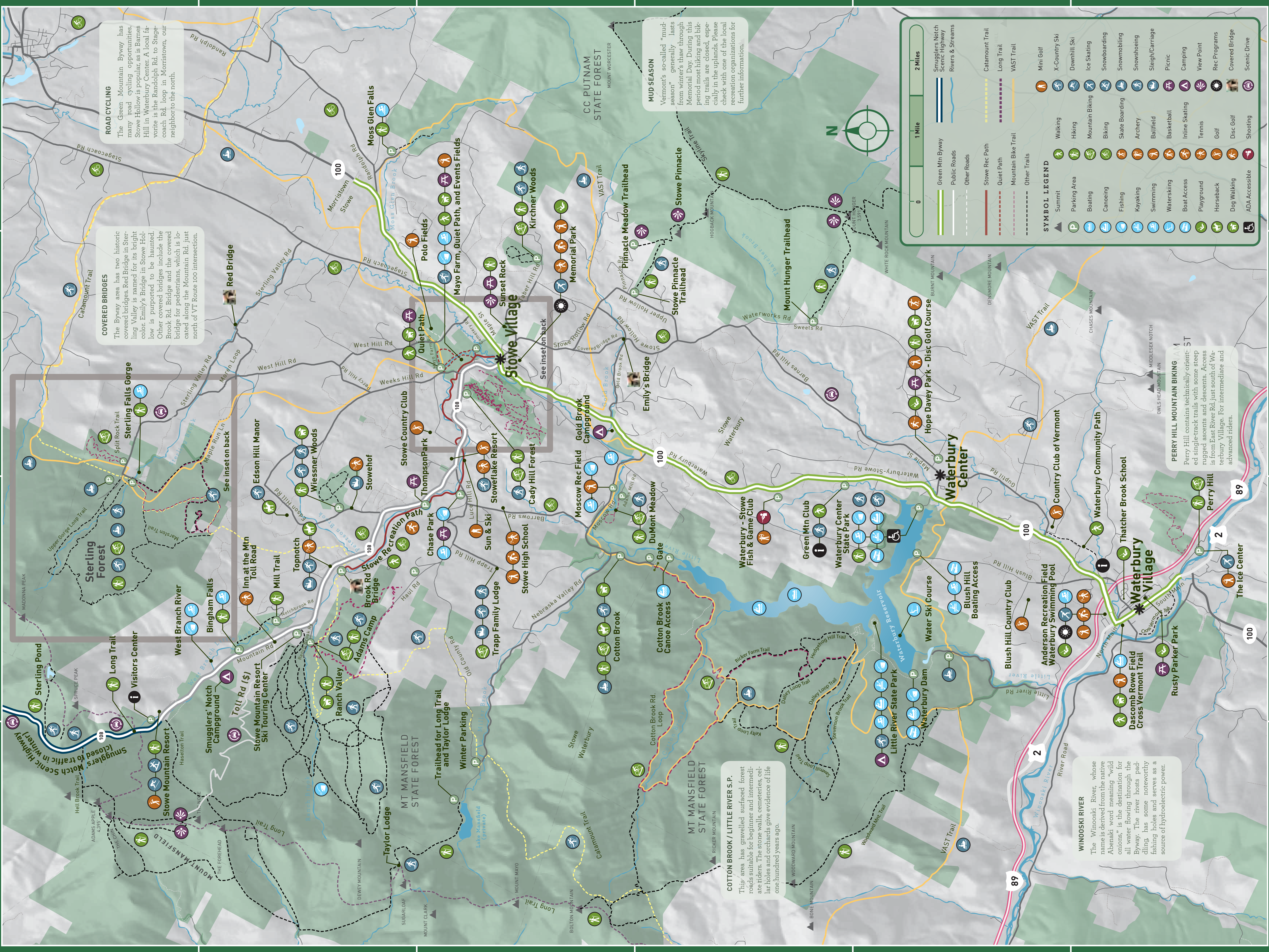
- ADDITIONAL RESOURCES**
- Local Recreational Organizations**
- Catamount Trail Association - [catamounttrail.org](http://catamounttrail.org)
  - Green Mt. Club Visitors Center - [greenmountainclub.org](http://greenmountainclub.org)
  - Stowe Area Association - [gostowe.com](http://gostowe.com)
  - Stowe Land Trust - [stowelandtrust.org](http://stowelandtrust.org)
  - Stowe Mountain Bike Club (SMBC) - [stowemtnbike.com](http://stowemtnbike.com)
  - Stowe Recreation Department - [stowerec.org](http://stowerec.org)
  - Vermont Association of Snow Travelers (VAST) - [vtvast.org](http://vtvast.org)
  - Vermont Forests, Parks & Recreation - [vtfrpr.org](http://vtfrpr.org)
  - Vermont Department of Tourism - [vermontvacation.com](http://vermontvacation.com)
  - Waterbury Recreation Department - [waterburyvt.com/recreation](http://waterburyvt.com/recreation)
  - Waterbury Tourism Council - [waterbury.org](http://waterbury.org)
- Recommended Maps and Guidebooks available locally**
- Day Hikers Guide to Vermont
  - 50 Hikes in Vermont
  - Mount Mansfield Nordic Skiing & Snowshoe Trails (map)
  - Mount Mansfield and the Worcester Range Hiking Trail (map)
  - Northern Vermont Hiking Trails (map)
  - Snow Shoeing in Vermont: A Guide to the Best Winter Hikes
  - Stowe Mountain Bike Club Trail Map
  - Stowe Walking Tour Guide
  - The Walkers Guide to Vermont

Green Mountain Byway Recreation Guide, Town of Stowe Conservation Commission  
Cover photograph by Matthew Bruhns/BruhnsPhoto  
Funded by Lamolle County and Central Vermont Regional Planning Commissions.



# Stowe and Waterbury Recreation Guide





**ROAD CYCLING**  
The Green Mountain Byway has many road cycling opportunities. Stowe Hollow is popular, as is Barnes Hill in Waterbury Center. A local favorite is the Randolph Rd. to Stagecoach Rd. loop in Morrisstown, our neighbor to the north.

**COVERED BRIDGES**  
The Byway area has two historic covered bridges. Red Bridge in Sterling Valley is named for its bright color. Emily's Bridge in Stowe Hollow is purported to be haunted. Other covered bridges include the Brook Rd. Bridge and the covered bridge for pedestrians, which is located along the Mountain Rd. just north of VT Route 100 intersection.

**MUD SEASON**  
Vermont's so-called "mud season" generally lasts from winter's thaw through Memorial Day. During this period most hiking and biking trails are closed, especially in the uplands. Please check with one of the local recreation organizations for further information.

**COTTON BROOK / LITTLE RIVER S.P.**  
This area has gravelled surfaced forest roads suitable for beginner and intermediate riders. The stone walls, cemeteries, cellar holes and orchards give evidence of life one hundred years ago.

**WINOOSKI RIVER**  
The Winooski River, whose name is derived from the native Abenaki word meaning "wild onions," is the destination for all water flowing through the Byway. The river hosts paddling, has some noteworthy fishing holes and serves as a source of hydroelectric power.

**PERRY HILL MOUNTAIN BIKING**  
Perry Hill contains technically oriented single-track trails with some steep rugged ascents and descents. Access is from East River Rd. just south of Waterbury Village. For intermediate and advanced riders.

**SYMBOL LEGEND**

▲ Summit	🚶 Walking	🏠 Mini Golf
🅑 Parking Area	🚶 Hiking	🏂 X-Country Ski
🚣 Boating	🚴 Mountain Biking	🏂 Downhill Ski
🚣 Canoeing	🚴 Biking	🏂 Ice Skating
🎣 Fishing	🏂 Skates Boarding	🏂 Snowboarding
🚣 Kayaking	🎯 Archery	🏂 Snowmobiling
🏊 Swimming	🏀 Basketball	🏂 Snowshoeing
🚣 Waterskiing	🏈 Football	🏂 Sleigh/Carriage
🚣 Boat Access	🏈 Tennis	🏂 Picnic
🏊 Playground	🏈 Golf	🏂 Camping
🐎 Horseback	🏈 Rec Programs	🏂 View Point
🐕 Dog Walking	🏈 Disc Golf	🏂 Covered Bridge
♿ ADA Accessible	🏈 Shooting	🏂 Scenic Drive

**Scale:** 0, 1 Mile, 2 Miles

**Line Styles:**  
 - Green Min Byway  
 - Public Roads  
 - Other Roads  
 - Slow Rec Path  
 - Quiet Path  
 - Mountain Bike Trail  
 - Other Trails  
 - Catamount Trail  
 - Long Trail  
 - VAST Trail