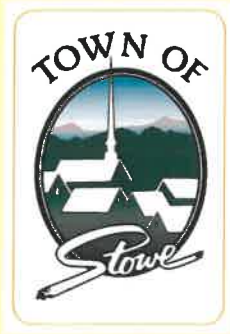


Significant Wildlife Habitat & Natural Communities

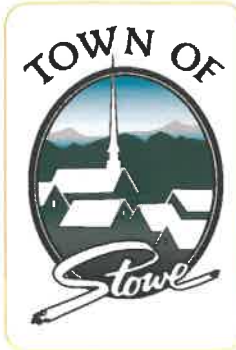
Stowe Town Plan

Map #1

- CLASS 2 WETLANDS
- DEER WINTERING AREAS
- SIGNIFICANT NATURAL COMMUNITIES
- HIGHEST PRIORITY HABITAT & CONNECTING BLOCKS
- ECOLOGIC HOTSPOTS
- PRIORITY WILDLIFE CROSSINGS
- STREAMS & ASSOCIATED RIPARIAN AREAS



All habitat data has been developed by the Vermont Department of Fish & Wildlife

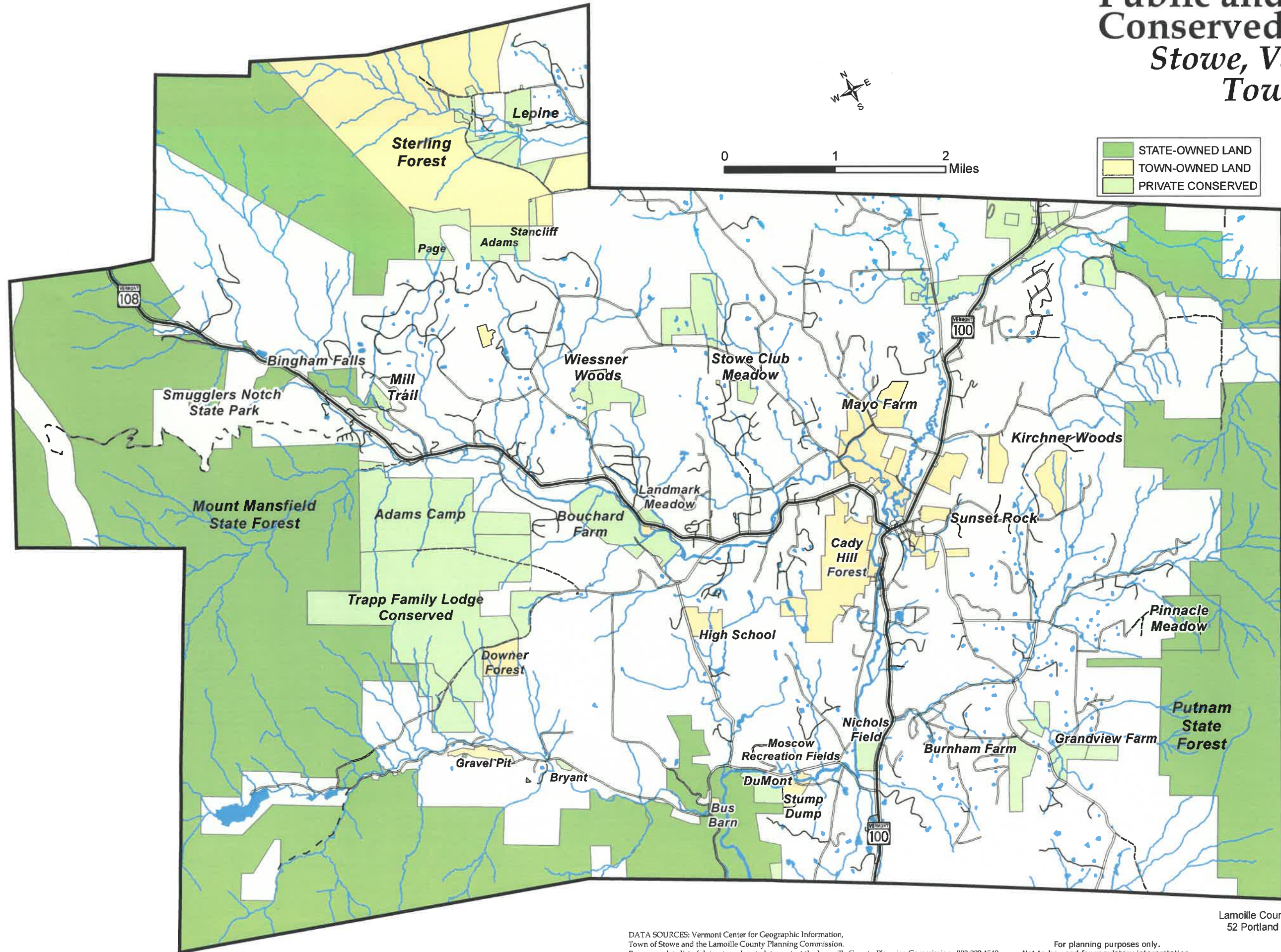


Public and Conserved Land

Stowe, Vermont

Town Plan

Map #2



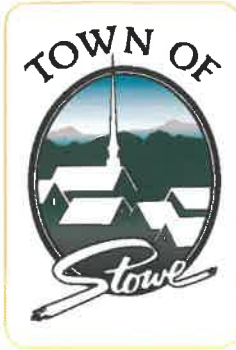
	STATE-OWNED LAND
	TOWN-OWNED LAND
	PRIVATE CONSERVED

Traverse Mercator
VT State Plane
Meters, NAD83

DATA SOURCES: Vermont Center for Geographic Information,
Town of Stowe and the Lamoille County Planning Commission.
For a complete list of datasets and metadata contact the Lamoille County Planning Commission. 802.888.4548

For planning purposes only.
Not to be used for regulatory interpretation.

Lamoille County Planning Commission
52 Portland St, Morrisville, VT 05661
802.888.4548
Updated April 2014



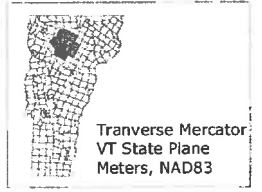
Land Use Plan

Stowe, Vermont

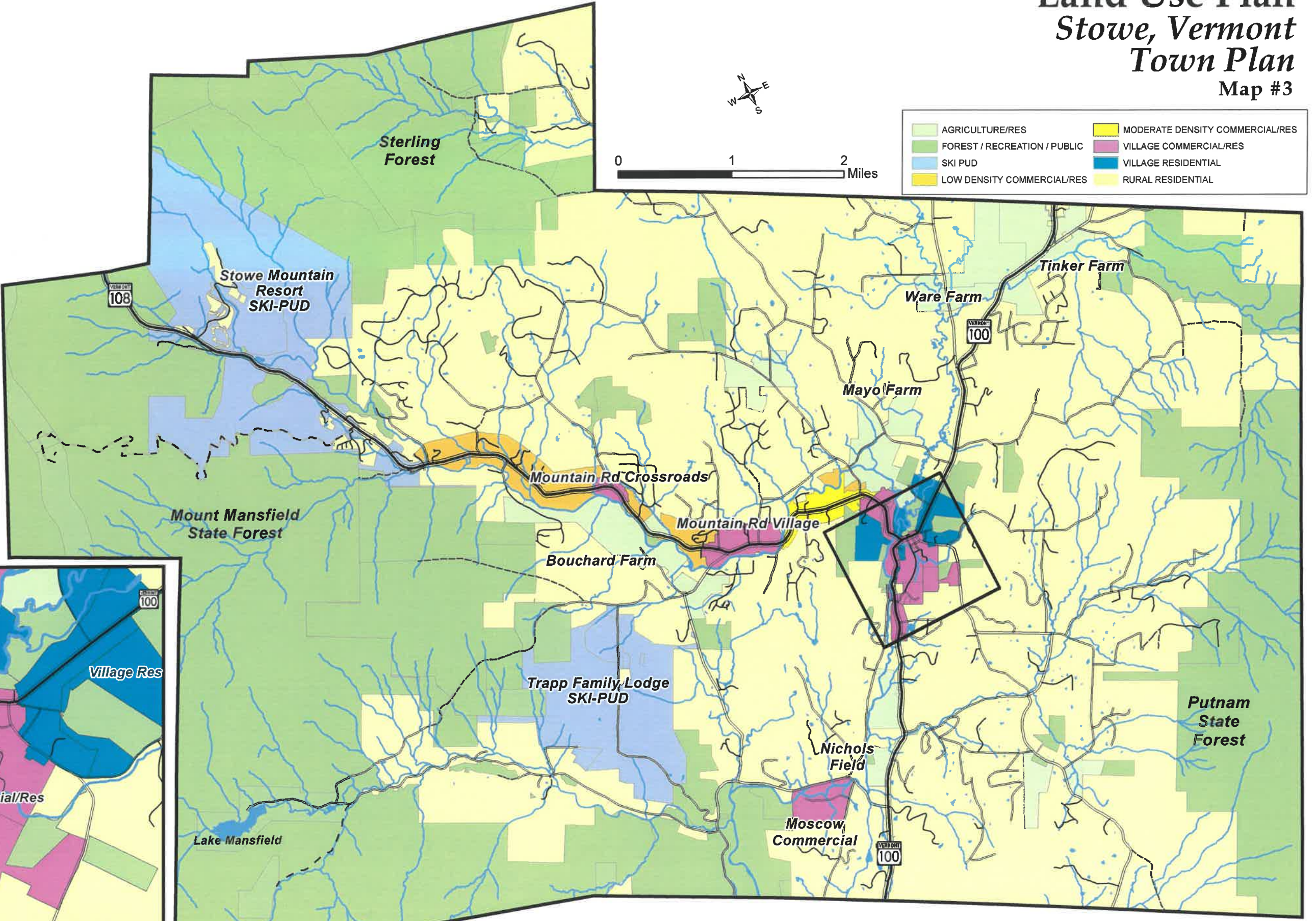
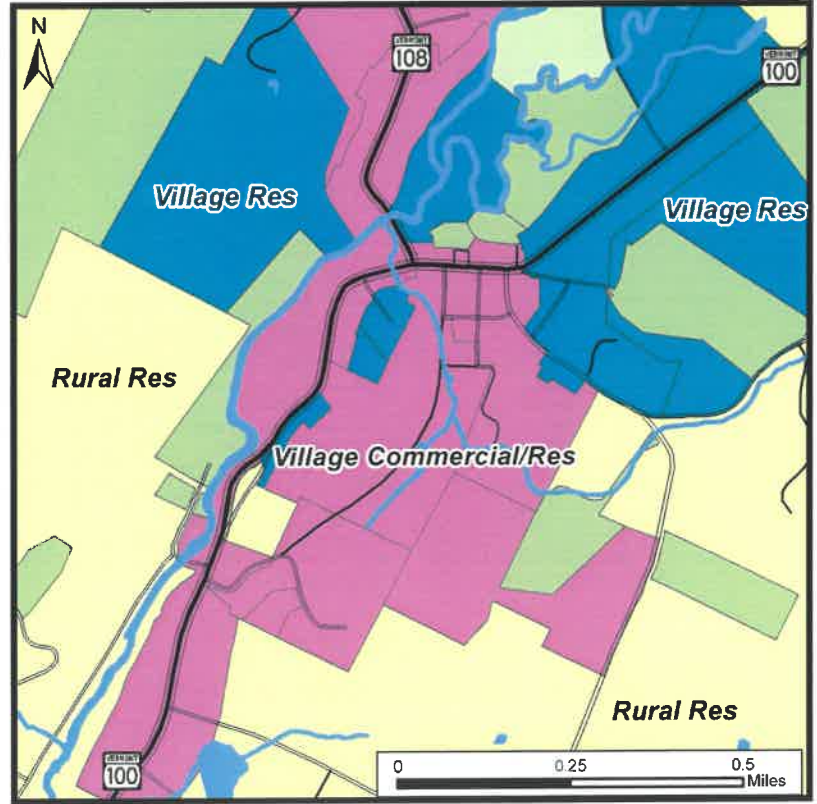
Town Plan

Map #3

GROWTH CENTERS
 SKI PUD:
 TRAPP FAMILY LODGE
 STOWE MOUNTAIN SKI RESORT
 STOWE VILLAGE
 LOWER VILLAGE
 MOUNTAIN ROAD VILLAGE
 MOUNTAIN ROAD CROSSROADS



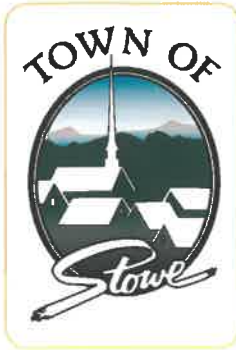
Village Inset



AGRICULTURE/RES	MODERATE DENSITY COMMERCIAL/RES
FOREST / RECREATION / PUBLIC	VILLAGE COMMERCIAL/RES
SKI PUD	VILLAGE RESIDENTIAL
LOW DENSITY COMMERCIAL/RES	RURAL RESIDENTIAL

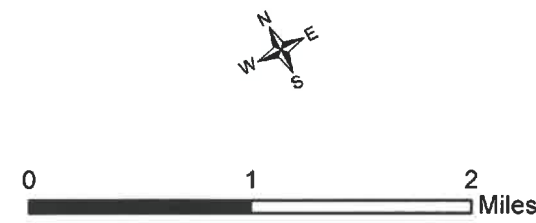
DATA SOURCES: Vermont Center for Geographic Information, Town of Stowe and the Lamoille County Planning Commission. For a complete list of datasets and metadata contact the Lamoille County Planning Commission, 802.888.4548

For planning purposes only. Not to be used for regulatory interpretation.



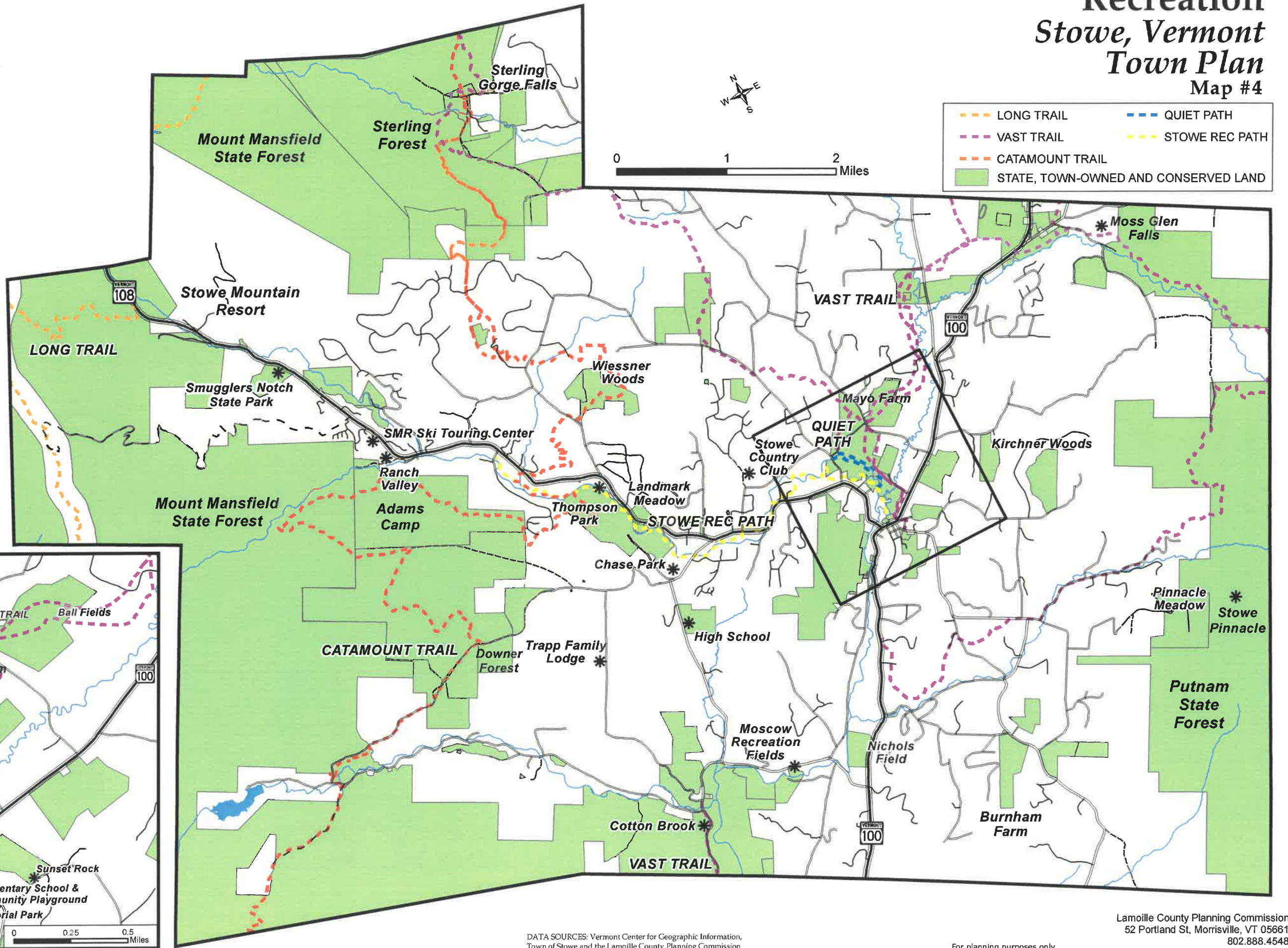
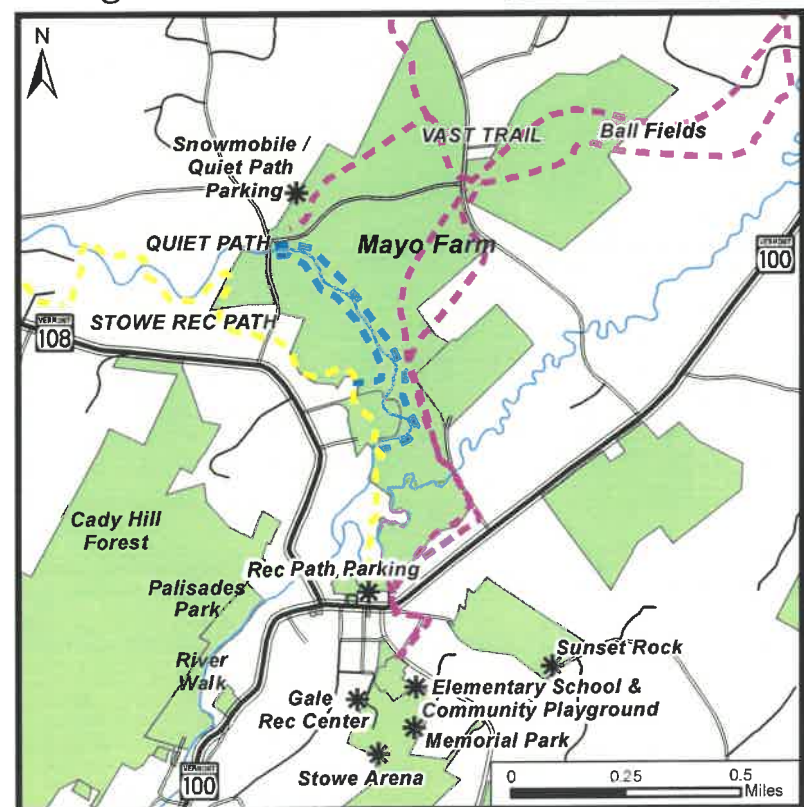
Recreation Stowe, Vermont Town Plan Map #4

- LONG TRAIL
- VAST TRAIL
- CATAMOUNT TRAIL
- STATE, TOWN-OWNED AND CONSERVED LAND
- QUIET PATH
- STOWE REC PATH



Transverse Mercator
VT State Plane
Meters, NAD83

Village Inset

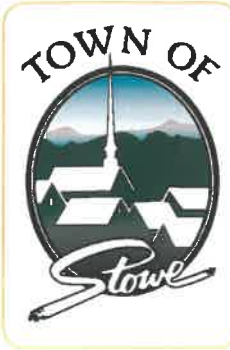


DATA SOURCES: Vermont Center for Geographic Information,
Town of Stowe and the Lamoille County Planning Commission.
For a complete list of datasets and metadata contact the Lamoille County Planning Commission. 802.888.4548

For planning purposes only.
Not to be used for regulatory interpretation.

Lamoille County Planning Commission
52 Portland St, Morrisville, VT 05661
802.888.4548

Updated April 14, 2014

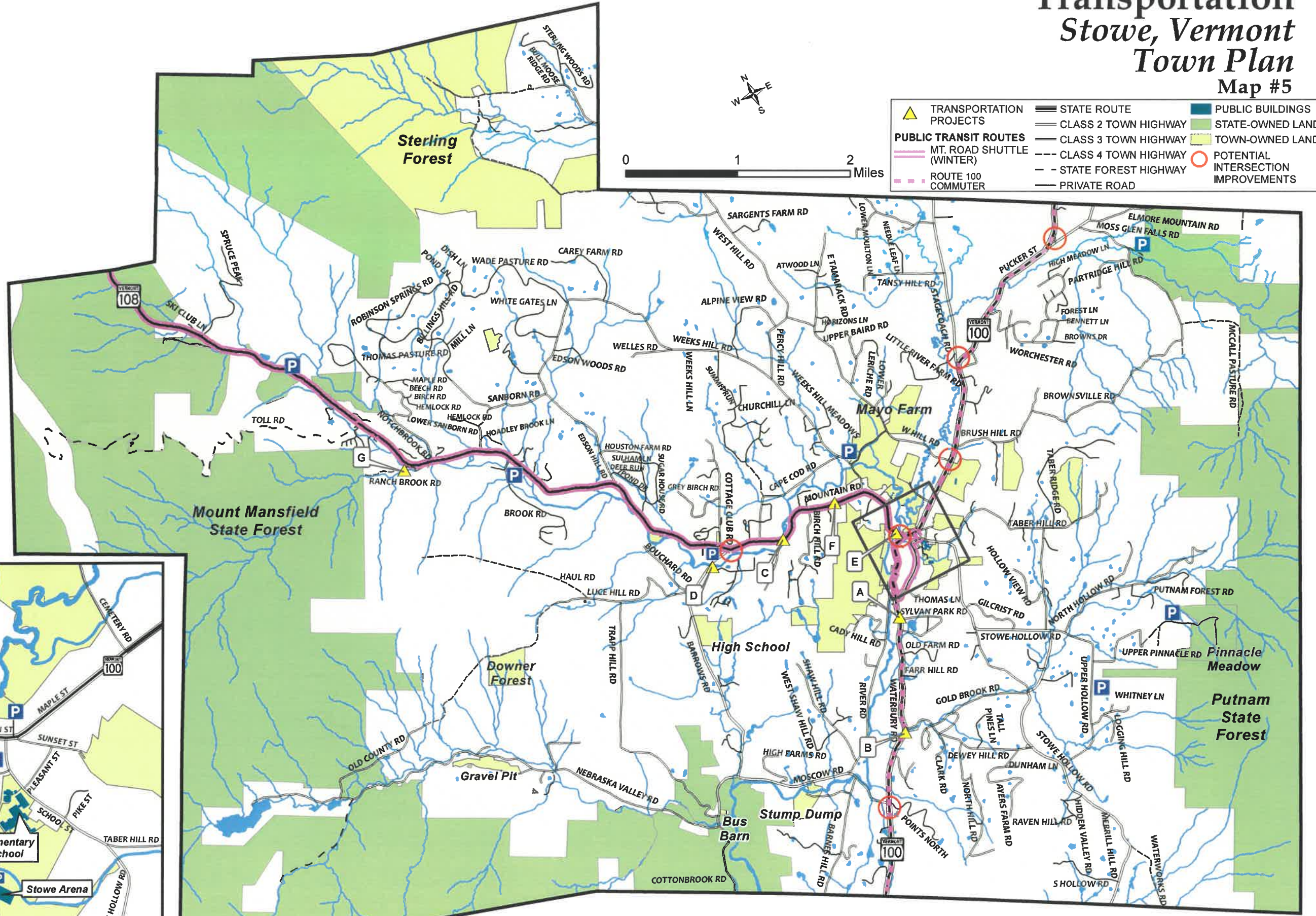
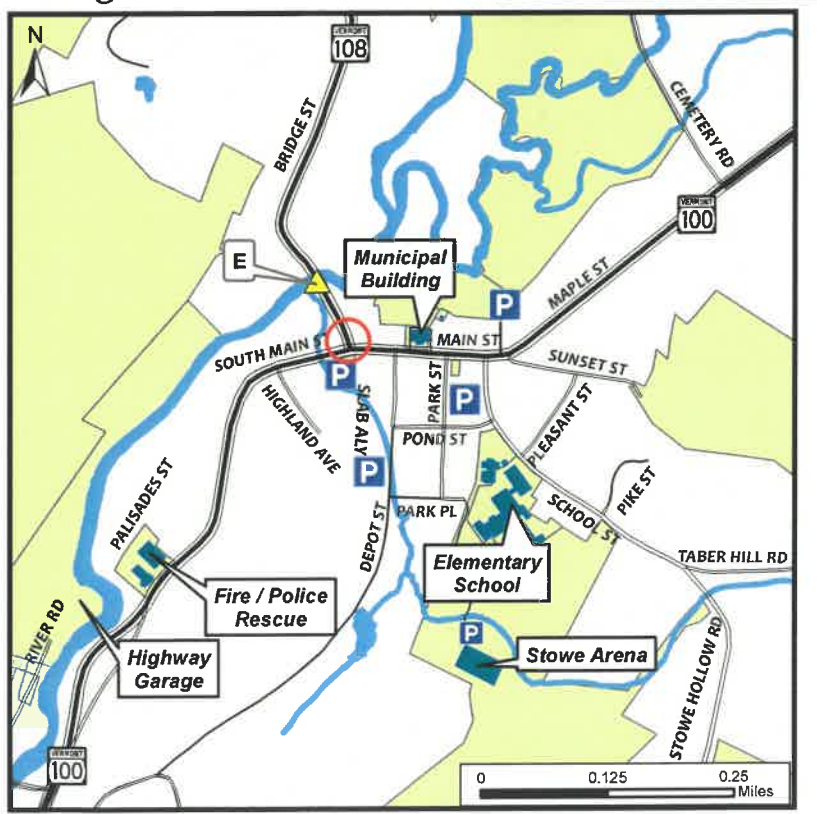


Transportation Stowe, Vermont Town Plan Map #5

- TRANSPORTATION PROJECT PRIORITIES**
- A VT 100 SIDEWALK LOWER VILLAGE
 - B REPLACE VT 100 BRIDGE OVER GOLD BROOK
 - C REPLACE VT 108 BRIDGE OVER WEST BRANCH
 - D REPLACE LUCE HILL RD BRIDGE
 - E REPLACE VT 108 BRIDGE OVER WATERBURY RIVER
 - F MOUNTAIN ROAD SIDEWALK
 - G REPLACE RANCH BROOK RD BRIDGE

Traverse Mercator
VT State Plane
Meters, NAD83

Village Inset





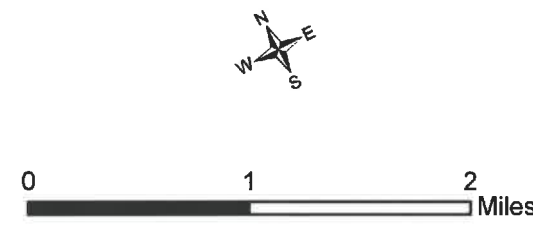
Public Utilities and Facilities

Stowe, Vermont

Town Plan

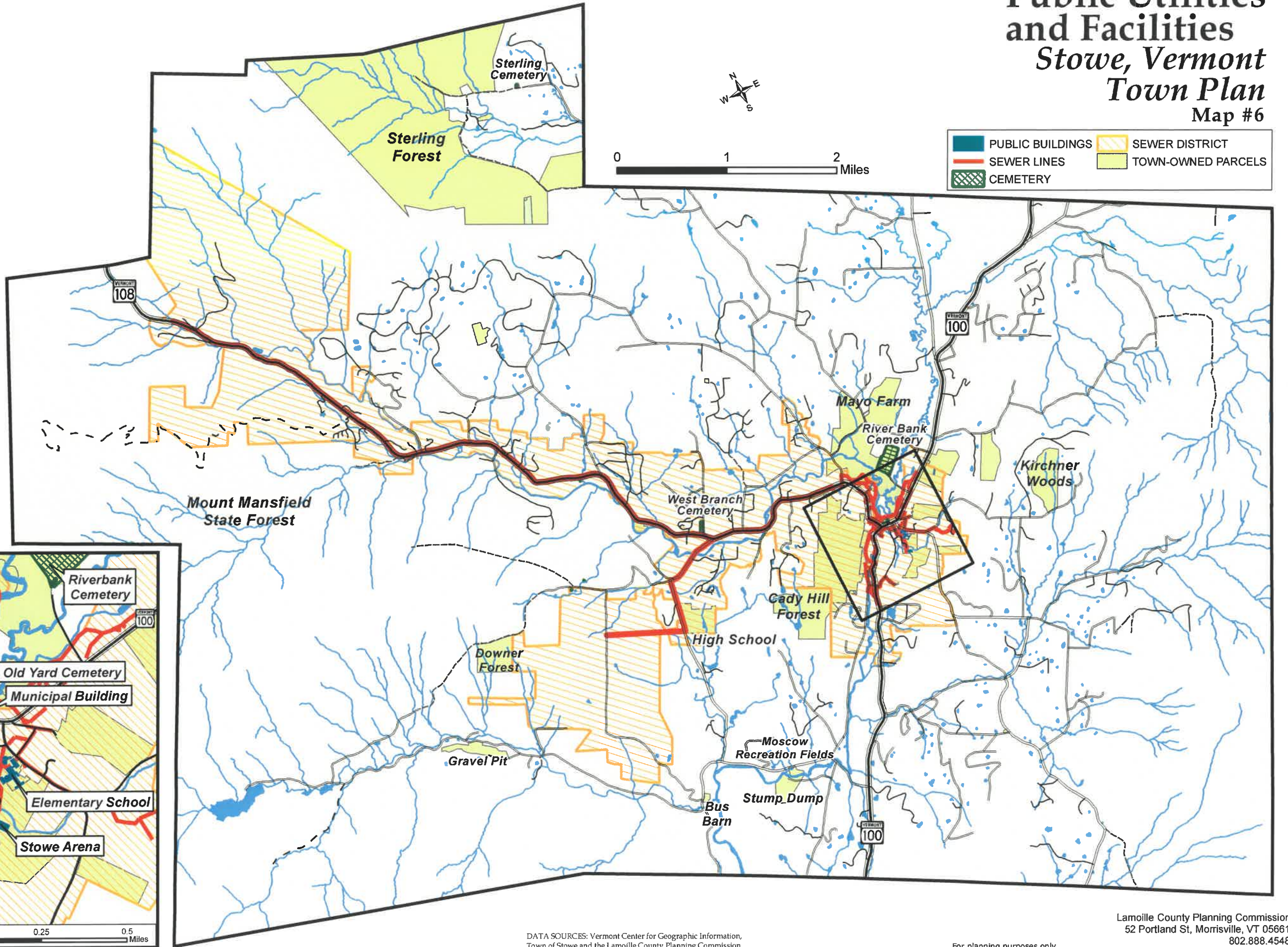
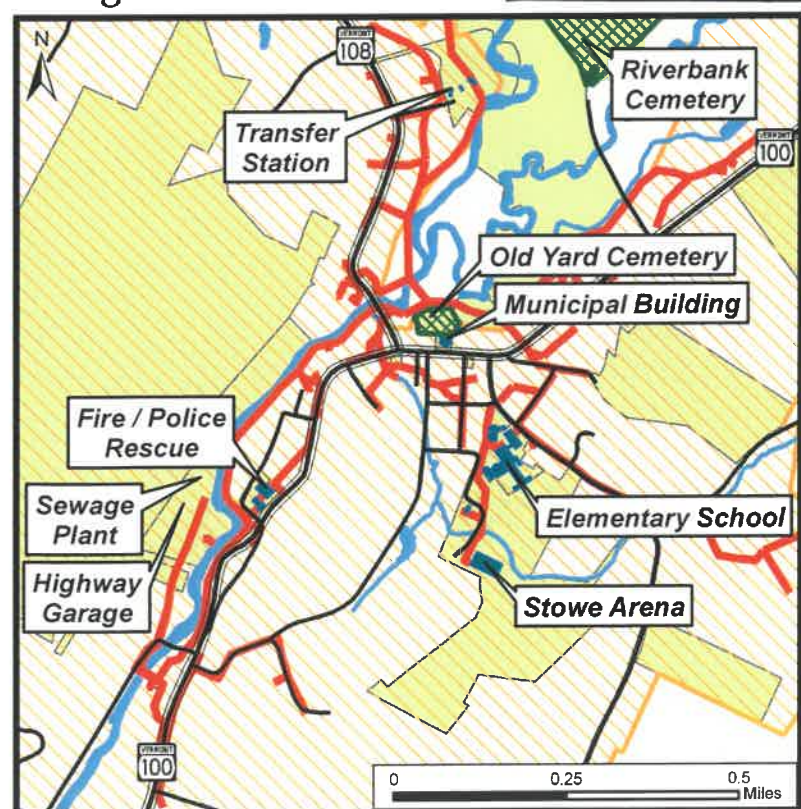
Map #6

	PUBLIC BUILDINGS		SEWER DISTRICT
	SEWER LINES		TOWN-OWNED PARCELS
	CEMETERY		



Traverse Mercator
VT State Plane
Meters, NAD83

Village Inset

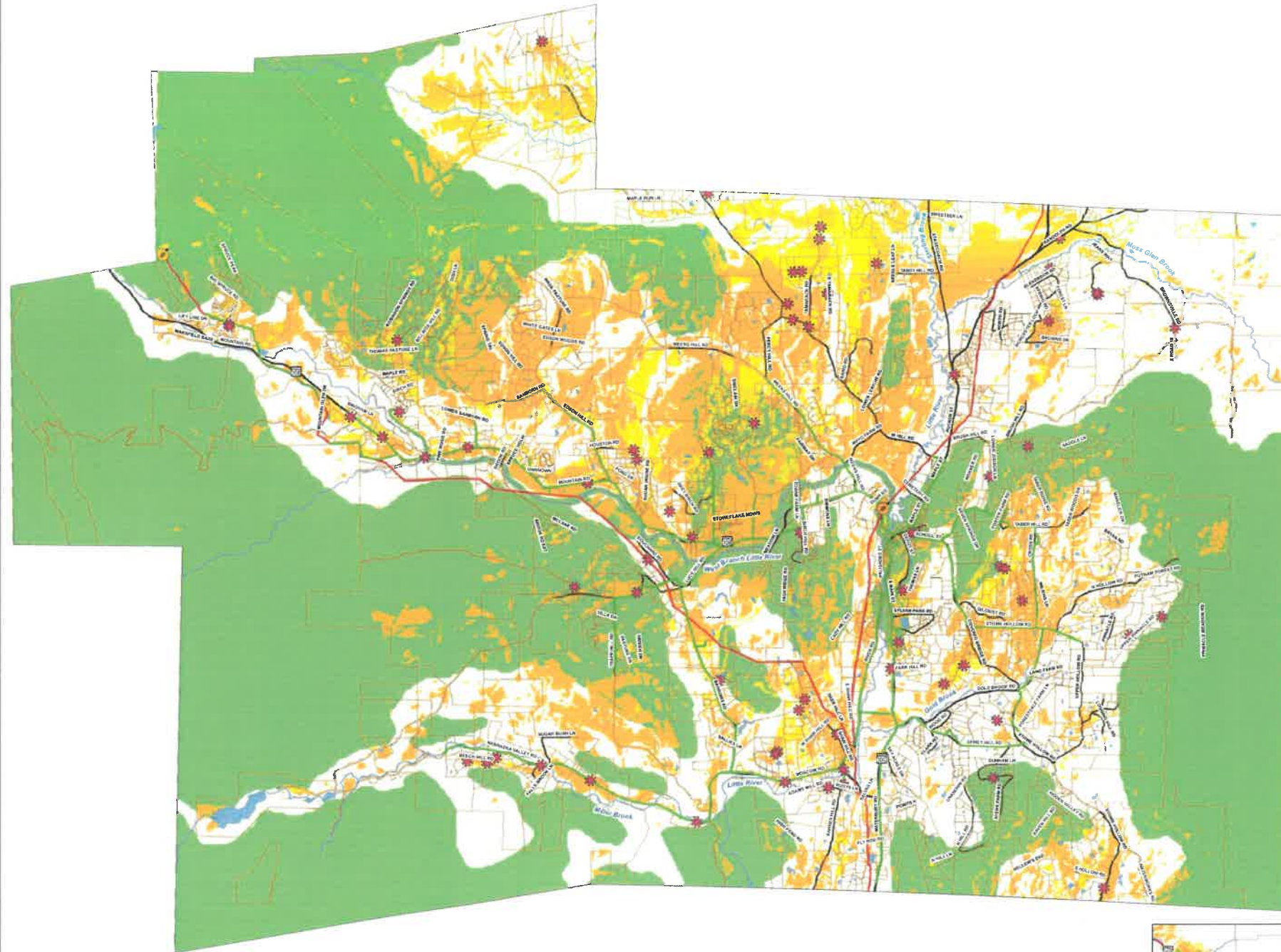


DATA SOURCES: Vermont Center for Geographic Information,
Town of Stowe and the Lamoille County Planning Commission.
For a complete list of datasets and metadata contact the Lamoille County Planning Commission. 802.888.4548

For planning purposes only.
Not to be used for regulatory interpretation.

Lamoille County Planning Commission
52 Portland St, Morrisville, VT 05661
802.888.4548
Updated April 14, 2014

Town of Stowe Renewable Energy Potential: SOLAR



Methodology

This map shows areas of resource potential for renewable energy generation from solar, i.e. locations where renewable energy generation would likely be most feasible according to the natural conditions of an area. This map also considers various other conditions, such as ecological zones, that may impact the feasibility of renewable energy development. These conditions are referred to as constraints.

Prime Solar

Areas with high solar potential and no environmental constraints.

Secondary Solar

Areas with high solar potential and environmental constraints that may pose an obstacle to development. These areas are shown on the map and include the following constraints:

- Agricultural soils (local, prime and statewide classifications)
- Protected lands
- Act 250 agricultural soil mitigation areas
- Deer wintering yards
- Highest priority forest blocks
- Hydric soils

No Solar

Areas with low solar potential or environmental constraints likely to prohibit development. These areas have been removed and are not shown in any way on this map. These environmental constraints are:

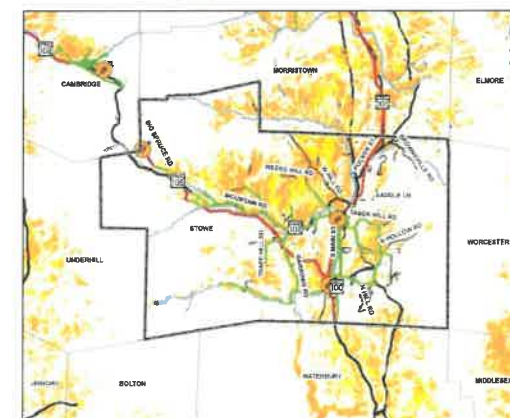
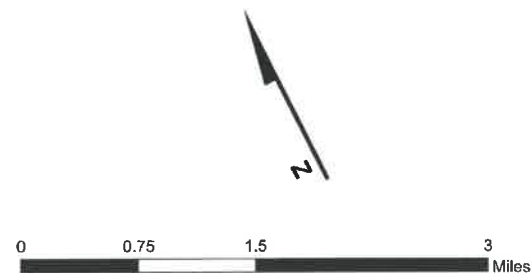
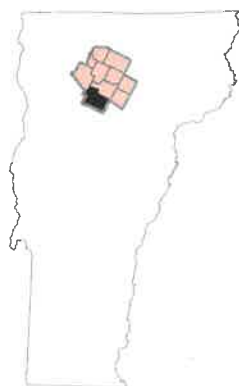
- FEMA floodways
- FEMA special flood hazard areas
- River corridors
- Federal wilderness areas
- Natural Communities and Rare, Threatened and Endangered Species
- Vernal pools
- Wetlands class 1 and 2

This map was created as part of a Regional Energy Planning Initiative being conducted by Vermont Regional Planning Commissions and the Vermont Public Service Department.

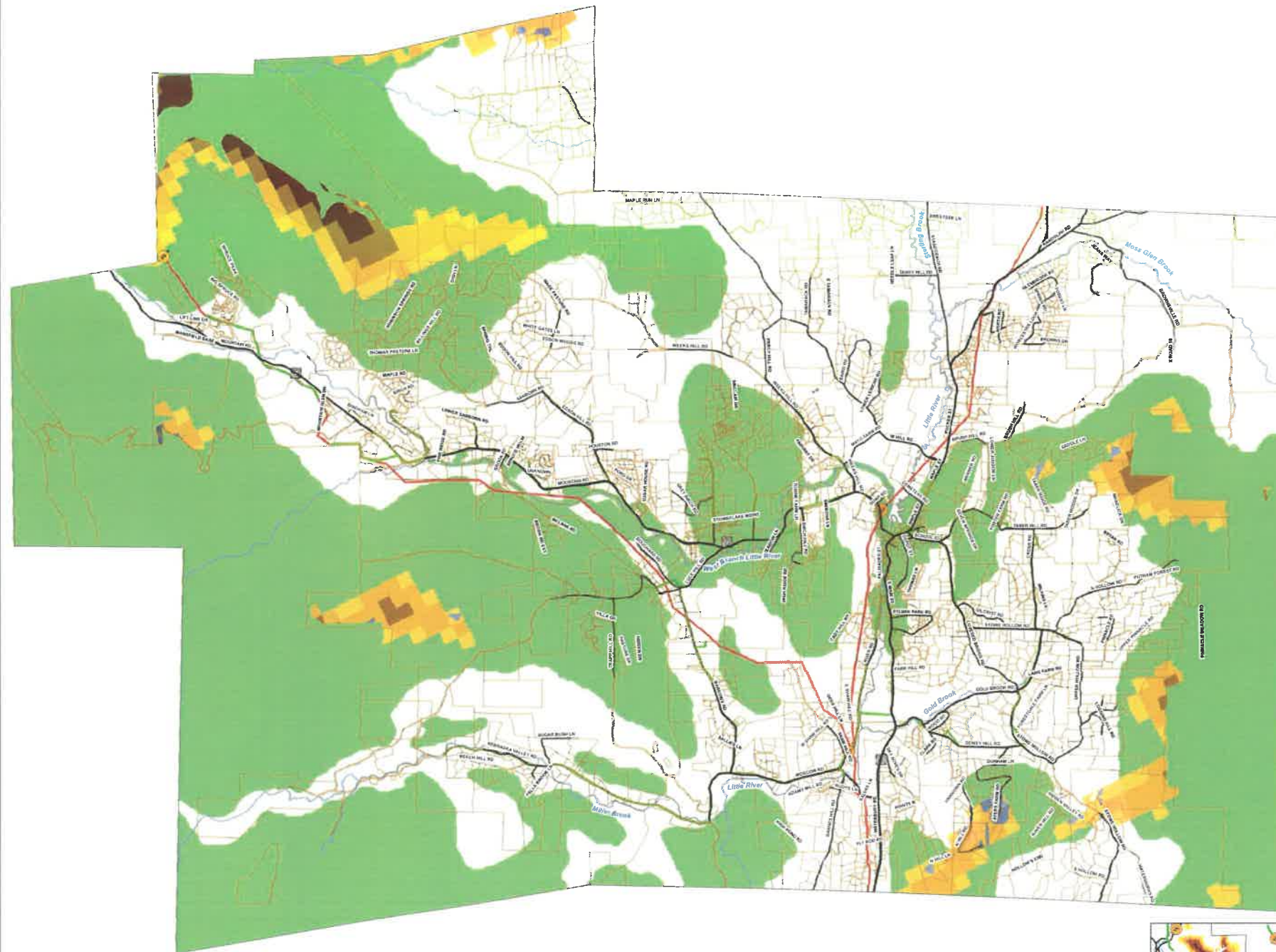
Created: Lamoille County Planning Commission, April 2017.

Key

	Existing Solar Sites
	Substations
	3 Phase Power Lines
	Transmission Lines
	Lakes/Ponds
	Rivers/Streams
	Parcels
	Prime Solar
	Secondary Solar
	Ridgeline/Hillside Overlay District
	No Solar



Town of Stowe Renewable Energy Potential: WIND



Methodology

This map shows areas of resource potential for renewable energy generation from wind, i.e. locations where renewable energy generation would likely be most feasible according to the natural conditions of an area. This map also considers various other conditions, such as ecological zones, that may impact the feasibility of renewable energy development. These conditions are referred to as constraints.

Prime Wind

Areas with high wind potential and no environmental constraints.

Secondary Wind

Areas with high wind potential and environmental constraints that may pose an obstacle to development. These areas are shown on the map and include the following constraints:

- Agricultural soils (local, prime and statewide classifications)
- FEMA special flood hazard areas
- Protected lands
- Act 250 agricultural soil mitigation areas
- Deer wintering yards
- Highest priority forest blocks
- Hydric soils

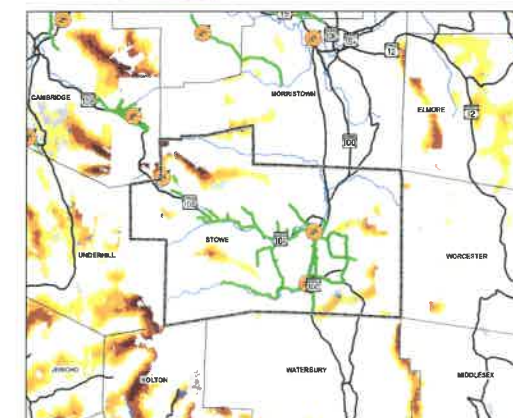
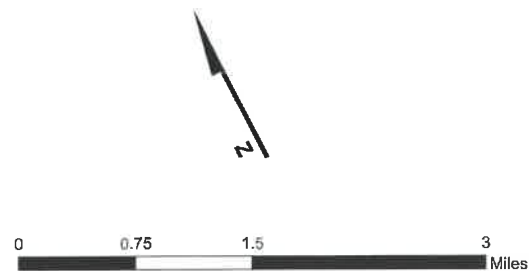
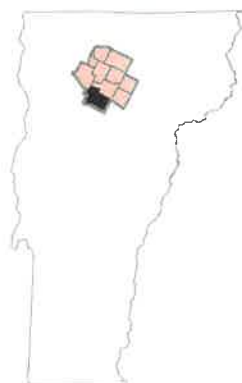
No Wind

Areas with low solar potential or environmental constraints likely to prohibit development. These areas have been removed and are not shown in any way on this map. These environmental constraints are:

- FEMA floodways
- FEMA special flood hazard areas
- River corridors
- Federal wilderness areas
- Natural Communities and Rare, Threatened and Endangered Species
- Vernal pools
- Wetlands class 1 and 2

This map was created as part of a Regional Energy Planning Initiative being conducted by Vermont Regional Planning Commissions and the Vermont Public Service Department.

Created: Lamoille County Planning Commission, April 2017.



Key

- Existing Wind Sites
- Substations
- 3 Phase Power Lines
- Transmission Lines
- Rivers/Streams
- Parcels
- Ridgeline/Hillside Overlay District
- Prime Wind
- Secondary Wind
- Background Area
- No Wind Area

Stowe Renewable Energy Potential: Hydroelectric

This map illustrates potential for energy development but not necessarily suitability



Hydroelectric Facilities

 Operational Facilities

Potential sites

 < 50 kW Capacity
 > 50 kW Capacity








Energy Infrastructure

 Substations
 Transmission Lines

3 Phase power line data for areas served by Morrisville Water and Light was not available.

Hydroelectric Likely Unsuitable

Areas with low hydroelectric potential or environmental constraints have been removed and are not shown in any way on this map.

- | | |
|---|---|
|  Streams |  State Highway |
|  Waterbodies |  Class 2 Road |
|  Town Boundary |  Class 3 Road |
| |  Class 4 Road |
| |  Private Road |
| |  Legal Trail |

Methodology

This map shows areas of resource potential for renewable energy generation from hydroelectric, i.e. dams that could be converted into hydroelectric facilities as well as active hydroelectric sites. Existing hydroelectric dam information was extracted from the Vermont Dam Inventory, while potential hydroelectric sites were derived from a study conducted by Community Hydro 2007. Based on estimates conducted within the report, this map categorizes dams based on their potential hydroelectric generation capacity, and the downstream hazard risk that would be involved in hydroelectric production at each site.

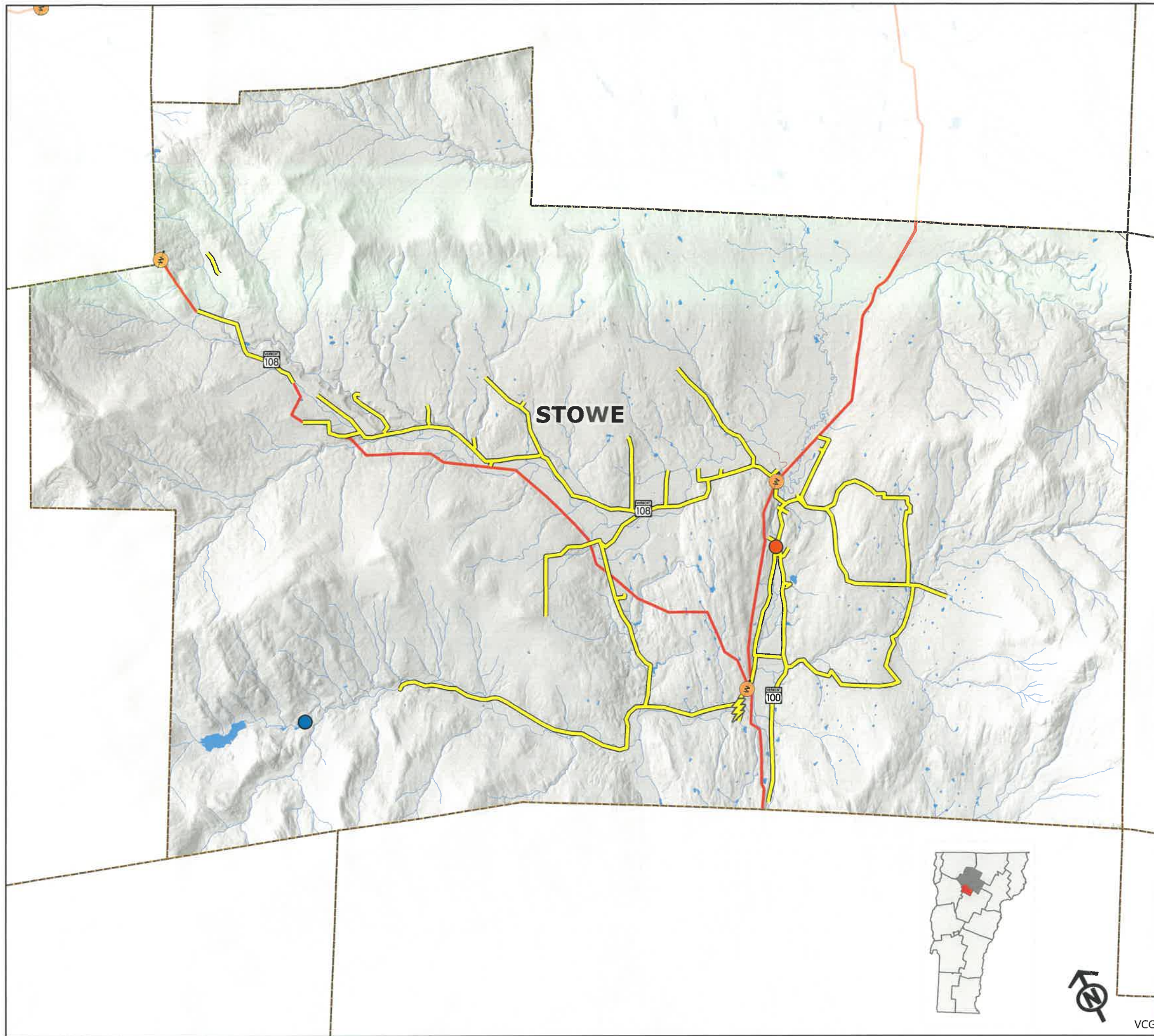
Data Sources:

POTENTIAL HYDROELECTRIC SITES: VCGI, 2017
SUBSTATIONS: VCGI, 2017
3 PHASE POWER LINES: Data from town utilities and GreenMountain Power
POLITICAL BOUNDARIES: 1:24000 USGS Quadrangles, VCGI, 1991.
ROADS: 1:5000 VTrans Road Data, 2017.
SURFACE WATER: On-screen digitized from 1:5000 digital orthophotos using USGS 7 1/2' quadrangles and 1:20000 color infrared aerial photography as additional source material, VCGI for VHD-USGS, 2001.

Map created by LCPC, 2018

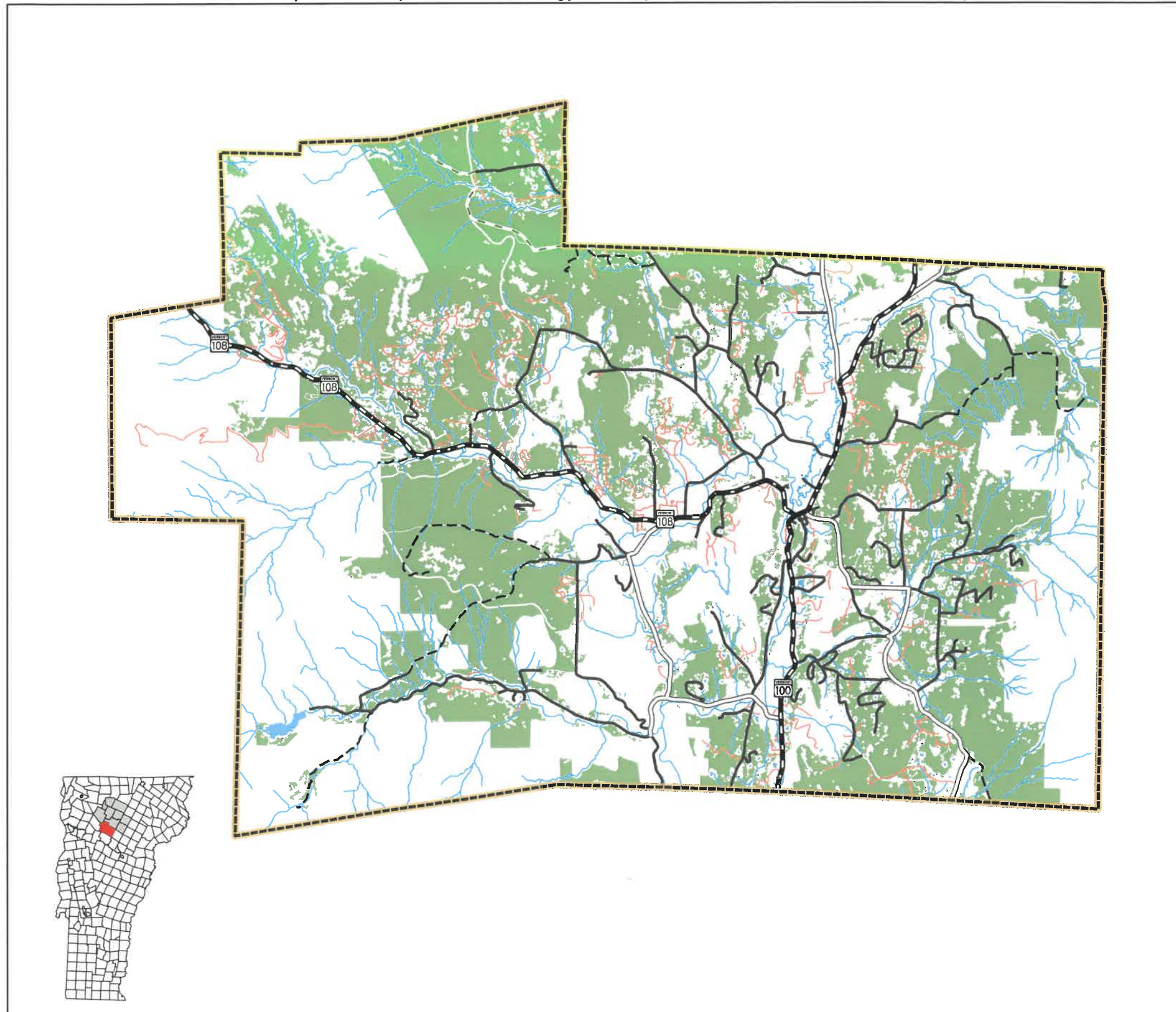
Data has not been field verified and is subject to change.
Use for planning purposes only.

0  4 Miles



Forest Area With Biomass Potential: Stowe, Vermont

This map illustrates potential for energy development but not necessarily suitability



- Potential Woody Biomass Areas
- State Highway
- Class 2 Road
- Class 3 Road
- Class 4 Road
- Legal Trail
- Private Road
- Streams
- Waterbody
- Town Boundary

This map shows areas of potential for woody biomass harvest and potential locations for combined heat and power facilities fed by woody biomass. The map also illustrates conditions that may limit the feasibility of extensive harvesting of wood for energy use. These conditions are referred to as constraints. Physical features (primary constraints) that make extensive harvesting infeasible which have been extracted from the biomass potential layer in this map include: FEMA floodways, River Corridors, Class 1 and 2 Wetlands, Vernal Pools, State-significant Natural Communities, Rare, Threatened, and Endangered Species, and Wilderness Areas. Secondary constraints not currently shown on this map may also pose limitations to biomass potential in these areas. Secondary constraints include: Agricultural soils (local, prime and statewide classifications) FEMA special flood hazard areas Protected lands Act 250 agricultural soil mitigation areas Deer wintering yards Highest priority forest blocks Hydric soils Secondary constraints should be evaluated on a case by case basis for all energy projects.

Data has not been field verified and is subject to change. Use for planning purposes only.

DATA SOURCES:
 VT POTENTIAL WOODY BIOMASS AREA: VCGI, 2017
 POLITICAL BOUNDARIES: 1:24000 USGS Quadrangles, VCGI, 1991.
 ROADS: 1:5000 VTrans Road Data, 2017.
 SURFACE WATER: On-screen digitized from 1:5000 digital orthophotos using USGS 7 1/2' quadrangles and 1:20000 color infrared aerial photography as additional source material, VCGI for VHD-USGS, 2001.

0 4 Miles

Map created by LCPC, May 2018

