

Agenda Summary
April 10, 2024

Agenda Item No. A-6

Bid Award – GMC 2500 (Parks Department ¾ Ton Pickup Truck)

Summary:

On April 2, the Town received sealed bids for a 2024 GMC 2500 HD (or approved equal) pickup, including plow and sander. The Bid included trade-in of a 2015 F-250 in ‘as-is’ condition. This truck is a planned replacement in the FY 2025 Equipment Fund.

The bid results were as follows:

PARKS DEPT 2500 HD:			
Bidder	Base Bid	Less Trade In	Total Net Bid Price
Springfield GMC	\$81,026.10	\$13,500.00	\$67,526.10

Springfield GMC is the only bidder and while the vehicle is not in inventory at Springfield, it is likely that a vehicle can be source from a sister dealership without having to source directly from the manufacturer.

Town Plan Impact: N/A

Fiscal Impact: These purchases are part of the FY2025 equipment fund, with \$85,000 budgeted.

Recommendation: Move to approve the award bid of the Parks Department 2025 GMC 2500 HD Truck in the amount of \$67,526.10 to Springfield GMC.

BID FORM

The bidder having examined the bid agrees to furnish one "2024 GMC 2500 HD 4X4 Crew Cab, Plow and Sander in accordance with the bid document for the following price:

Bid Price – One 2024 GMC 2500 HD 4X4 Crew Cab, \$ 81,026.10
Plow and Sander Fisher 9'6" VSS Plow 1.8yd Polycaster

Less Trade In – One 2015 F-250 4X4 with plow "as is" \$ 13,500.00

Total Net Bid Price for 2024 GMC 2500 HD 4X4 Crew Cab, Plow and Sander \$ 67,526.10

Guaranteed Delivery Date:

Delivery By: Determined upon bid acceptance due to inventory.

I, the undersigned representative of the company named below, hereby authorize and guarantee this bid.

Springfield Cadillac GMC
Company Name (please print)

429 River St. / PO Box 404, N. Springfield, VT 05150
Complete Address (please print)

Steven Horsky
Representative's Name (please print)

[Signature]
Authorized Signature

SALES & Leasing Consultant
Representative's Title (please print)

(802) 886-9643
Phone Number

3/22/2024
Date

Through its Town Manager, the Town of Stowe reserves the right to split bids, reject any or all bids, in part or whole, to waive any irregularities or informalities therein or to negotiate with any qualified source if doing so is in the best interest of Town. The Town also reserves the right to take factors into consideration other than price in awarding the bid, including the Guaranteed Delivery Date.




Date/Time: Mar 22, 2024 01:09 PM
Buyer: David Danforth
Phone: C: (802) 730-6144
Address: Stowe, VT 05672

Trade: 2015 Ford F-250, (31,000)
Salesperson: Steven Horsky

2024 GMC Sierra 2500HD, Body Type:

Cash	Balance Due
\$ Down	
\$0	\$67,526
\$0	\$67,526

	Total Trade Allowance:	\$13,500
	Total Trade Adjustments:	\$0
	Net Trade Allowance:	\$13,500

MSRP/Retail	\$62,530.00
Total Savings + Rebates	\$3,000.00
After all Discounts	\$59,530.00
BEDLINER	\$899.00
9'6" FISHER V PLOW	\$10,770.00
FISHER POLYCASTER 1.8	\$7,990.00
ALL WEATHER FLOOR LIN	\$365.00
COMMERCIAL ASSIST ST	\$919.10
Trade Allowance	\$13,500.00
Government Fees	\$54.00
Proc/Doc Fees	\$499.00
Total Balance Due	\$67,526.10

X _____
 Customer Signature

 Date

X _____
 Manager Signature

 Date

3.22.24

With approved credit.



Vehicle Locator

Dealer Information

SPRINGFIELD GMC
429 RIVER ST
NORTH SPRINGFIELD, VT 05150
Phone: 802-886-2281
Fax: 802-886-2505

1GT49ME77RF323007

Model Year: 2024
Make: GMC
Model: 2500HD Sierra
TK20743-Crew Cab Standard Box, 4WD
PEG: 3SA-SLE
Primary Color: GBA-Onyx Black
Trim: H0U-3SA/3SB/3VL/1SA--Cloth, Jet Black, Interior Trim
Engine: L8T-Engine: 6.6L, Gasoline V-8, SIDI
Transmission: MKM-10-Speed Automatic

Event Code: 5000-Delivered to Dealer
Order #: DCWRMQ
MSRP: \$62,530.00

Order Type: TRE-Retail Stock
Stock #: N/A
Inventory Status: Available

Additional Vehicle Information

GM Marketing Information

Vehicle Options

Chargeable Options

MSRP

B59-Remote Start Package	\$525.00
GBA-Onyx Black	\$495.00
K05-Engine Block Heater	\$100.00
PCQ-SLE Convenience Package	\$1,140.00
PXD-Wheels: 18" Machined Aluminum w/ Black Accents	\$300.00
QF6-Tires: LT275/70 R18 All Terrain, Blackwall	\$200.00
VYU-Snow Plow Prep / Camper Package	\$150.00
X31-Off-Road Package	\$325.00
ZM9-SLE Heat Package	\$400.00

No Cost Options

GT4-Rear Axle: 3.73 Ratio
JGH-GVW Rating 10,850 Lbs
L8T-Engine: 6.6L, Gasoline V-8, SIDI
MKM-10-Speed Automatic
NE1-CT/MA/MD/ME/NJ/NY/OR/PA/RI/VT/WA Emissions
R6J-CUSTOMER DIALOGUE NETWORK

Other Options

3SA-SLE	A2X-Power Seat Adjuster (Driver's Side)
AKO-Deep Tinted Glass	AU3-Power Door Locks
AZ3-Seats: Front 40/20/40 Split-Bench, Full Feature	B30-Floor Covering: Carpet, Color Keyed
BTV-Remote Vehicle Starter System	C49-Defogger, Rear Window Electric
CJ2-Climate Control, Electronic - Dual-zone	DBG-Mirrors, O/S: Man. Ext & Folding, Heat, Turn Indicator
E63-Body: Pick-Up Bed	G80-Auto Locking Differential, Rear
H0U-3SA/3SB/3VL/1SA--Cloth, Jet Black, Interior Trim	I0K-Premium GMC Infotainment system
JL1-Integrated Trailer Brake Controller	K34-Cruise Control
K47-Heavy Duty Air Filter	KI3-Heated Steering Wheel
KI4-120 Volt Electrical Receptacle, In Cab	KW5-Alternator, 220 AMP
N37-Steering Column, Manual Tilt & Telescoping	NQF-Transfer Case: w/ Rotary Dial Control, Electronic Shift
NZZ-Skid Plates	PDI-GMC Pro Safety
QK2-GMC MultiPro Tailgate	QT5-Tailgate Function--Manual w/ Assist, Pwr Release
RFQ-Focused Ordering Configuration	SAF-Lock, Spare Tire
T3U-LED Fog Lamps, Front	TQ5-Headlamps, Intellibeam
U01-Roof Marker Lamps	U2K-SiriusXM Satellite Radio (subscription)
UBI-2-USBs, Second Row Charge/Data Ports	UE1-OnStar Communication System
UE4-Following Distance Indicator	UEU-Sensor, Forward Collision Alert
UHY-Automatic Emergency Braking	UVB-Rear Vision Camera, HD
V46-Bumper, Front, Chrome	VJH-Bumper, Rear, Chrome Step
VK3-Front License Plate Mounting Provisions	Z82-Trailer Package
ZYG-Tire, Spare: LT275/70 R18 All Terrain, Blackwall	

"~" indicates vehicle belongs to Trading Partner's inventory

Disclaimer:

GM has tried to make the pricing information provided in this summary accurate. Please refer to actual vehicle invoice, however, for complete pricing information. GM will not make any sales or policy adjustments in the case of inaccurate pricing information in this summary.

VIN Search

1GT49ME77RF323007

GO

Select Vehicle

— Select Year —

Part Number Search

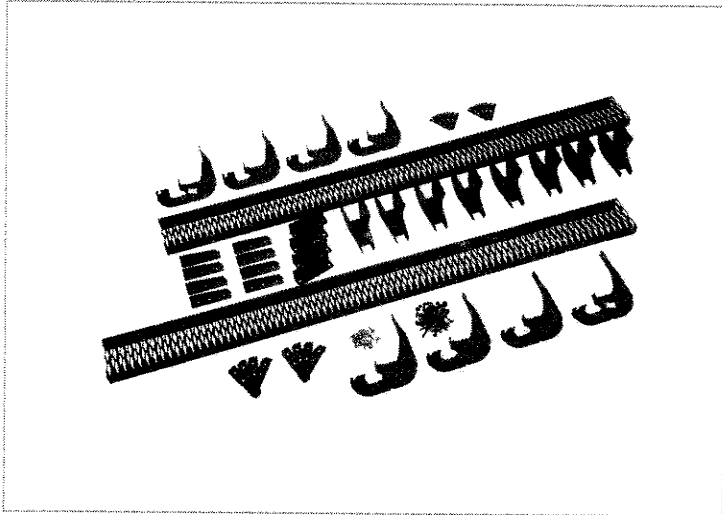
Enter Part Number

Show More

Home > All Parts > Exterior > Assist Steps > Details

1GT49ME77RF323007 : 2024 GMC Sierra 2500 HD

4 - Door Crew Cab Pickup : SLE : L8T : 158.9



Part No. 85522564 - Crew Cab Rectangular Commercial Assist Steps in Black

Part Only Price: \$785.00

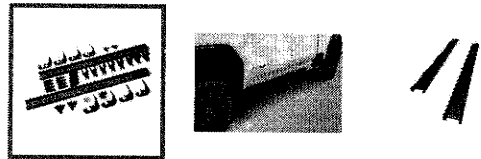
Installed Price: \$919.10

Est. Inventory: Contact ADL

Add to Cart

- Make it easier to get in and out of your vehicle
- Thoroughly tested through numerous cycles to last through the life of your vehicle
- Feature no-drill installation
- Rigorously tested to support the weight of multiple occupants
- Designed to meet the fit, appearance and compatibility standards of your vehicle
- Constructed of steel
- Grated steel step surface helps provide maximum traction and accessibility
- Sold in pairs and includes all mounting hardware

[View Compatible Vehicles](#)



Product Description	RPO Compatibility	Warranty	Specs	FAQ
-------------------------------------	-----------------------------------	--------------------------	-----------------------	---------------------

Product Description

Make it easier to get into and out of your vehicle with these sturdy GMC Accessories Commercial Assist Steps. These Crew Cab Work Step Assist Steps, also known as truck side steps, feature a grated steel traction pad to help provide more stable footing. Includes all mounting hardware.

⚠ WARNING: Cancer and Reproductive Harm - <https://www.P65Warnings.ca.gov>

Similar Items

VIN Search

1GT49ME77RF323007

GO

Select Vehicle

— Select Year — ▾

Part Number Search

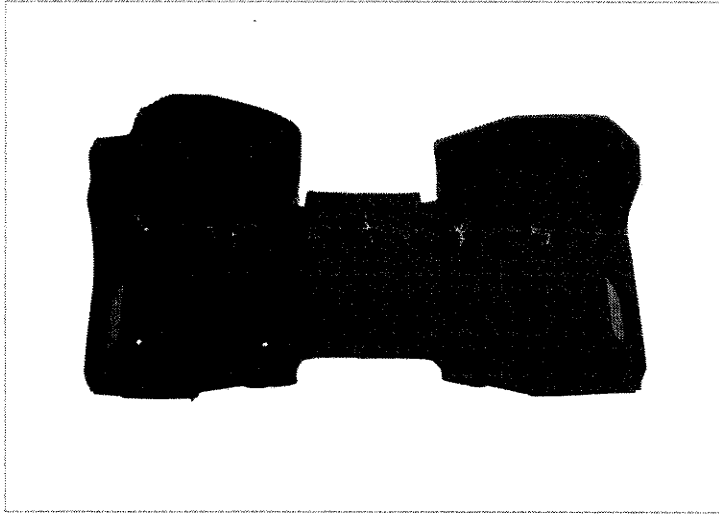
Enter Part Number

Show More

[Home](#) > [All Parts](#) > [Interior](#) > [Floor Liners](#) > [Details](#)

1GT49ME77RF323007 : 2024 GMC Sierra 2500 HD

4 - Door Crew Cab Pickup : SLE : L8T : 158.9



Part No. 84333608 - First-Row Interlocking Premium All-Weather Floor Liner in Jet Black with GMC Logo (for Models without Center Console)

Part Only Price: \$125.00 ⓘ

Installed Price: \$139.90

Est. Inventory: 240 ⓘ

Add to Cart

- Designed, engineered and tested specifically for your GMC to ensure a precise fit around your entire footwell and provide protection where you need it most
- Drop-in installation – no additional hooks, fasteners, anchors or grommets required
- Made of advanced rubber-like thermoplastic elastomer (TPE) compound for added durability and longevity
- Precision engineered and injection molded to help ensure an exact fit and provide a detailed, premium finish
- Molded grooves help channel debris, snow, mud and water away from your feet and clothing
- Incorporates a high-friction backing and underside texture to help prevent shifting and sliding
- Push-and-click fasteners allow you to easily secure to your interior floor and help keep your liner in place, providing added traction and stability
- Lightweight, pliable design that conforms to your floor for simple installation and removal
- 100% recyclable and made with a virtually odorless latex-free, PVC-free material
- Heavy-duty material helps prevent discoloration, cracking or curling over time
- Coated surface allows you to easily spray down with a garden hose and remove mud, dirt, salt or road debris
- Custom-designed raised sides provide maximum carpet coverage and a barrier to help keep messes contained for easy cleaning
- Unique GMC 3-dimensional design helps provide carpet protection on the sides, bottom and front area of your footwells
- Can cover previous wear of interior floors and help protect against future wear from everyday use
- Designed to GMC specifications to meet the appearance standards of your interior
- Made to match your GMC vehicle and interior with an embossed logo on the first row
- For models without center console

VIN Search

1GT49ME77RF323007



Select Vehicle

— Select Year — ▾

Part Number Search

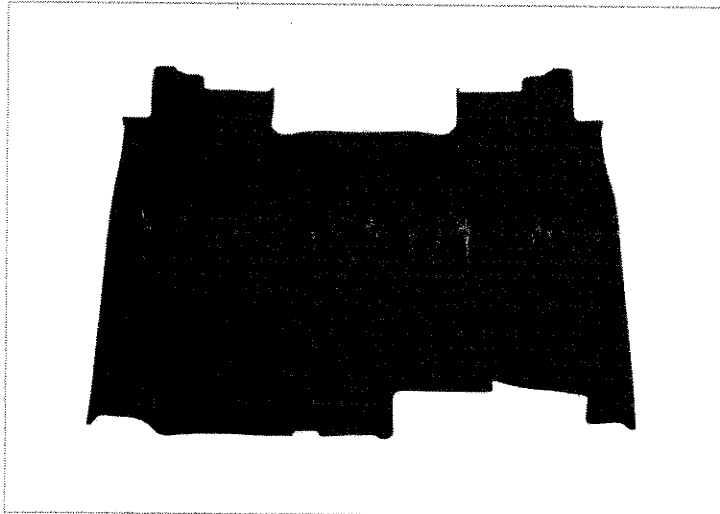
Enter Part Number

Show More

[Home](#) > [All Parts](#) > [Interior](#) > [Floor Liners](#) > [Details](#)

1GT49ME77RF323007 : 2024 GMC Sierra 2500 HD

4 - Door Crew Cab Pickup : SLE : L8T : 158.9



Part No. 84333637 - Crew Cab Second-Row Interlocking Premium All-Weather Floor Liner in Jet Black

Part Only Price: \$90.00 ⓘ

Installed Price: \$104.90

Est. Inventory: 478 ⓘ

Add to Cart

- Designed, engineered and tested specifically for your GMC to ensure a precise fit around your entire footwell and provide protection where you need it most
- Drop-in installation – no additional hooks, fasteners, anchors or grommets required
- Made of advanced rubber-like thermoplastic elastomer (TPE) compound for added durability and longevity
- Precision engineered and injection molded to help ensure an exact fit and provide a detailed, premium finish
- Molded grooves help channel debris, snow, mud and water away from your feet and clothing
- Incorporates a high-friction backing and underside texture to help prevent shifting and sliding
- Lightweight, pliable design that conforms to your floor for simple installation and removal
- 100% recyclable and made with a virtually odorless latex-free, PVC-free material
- Heavy-duty material helps prevent discoloration, cracking or curling over time
- Coated surface allows you to easily spray down with a garden hose and remove mud, dirt, salt or road debris
- Custom-designed raised sides with interlocking design provide maximum carpet coverage and a barrier to help keep messes contained for easy cleaning
- Unique GMC 3-dimensional design helps provide carpet protection on the sides, bottom and front area of your footwells
- Can cover previous wear of interior floors and help protect against future wear from everyday use
- Designed to GMC specifications to meet the appearance standards of your interior
- Includes a two-piece interlocking floor liner for the second row

[View Compatible Vehicles](#)