

UNDERHILL

MORRISTOWN

WB Mill Tr

WB Brook Rd

108 STOWE

WB Thompson Park

WB Chase Park

WB Weeks Farm Rd

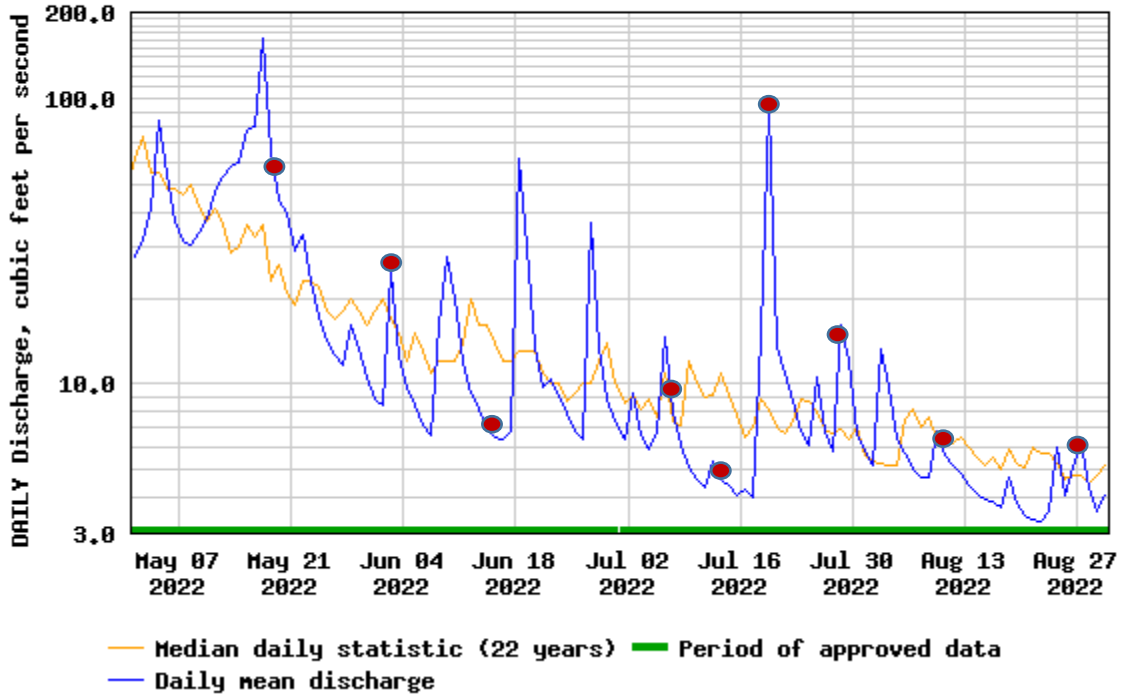
WB Abv Little

100

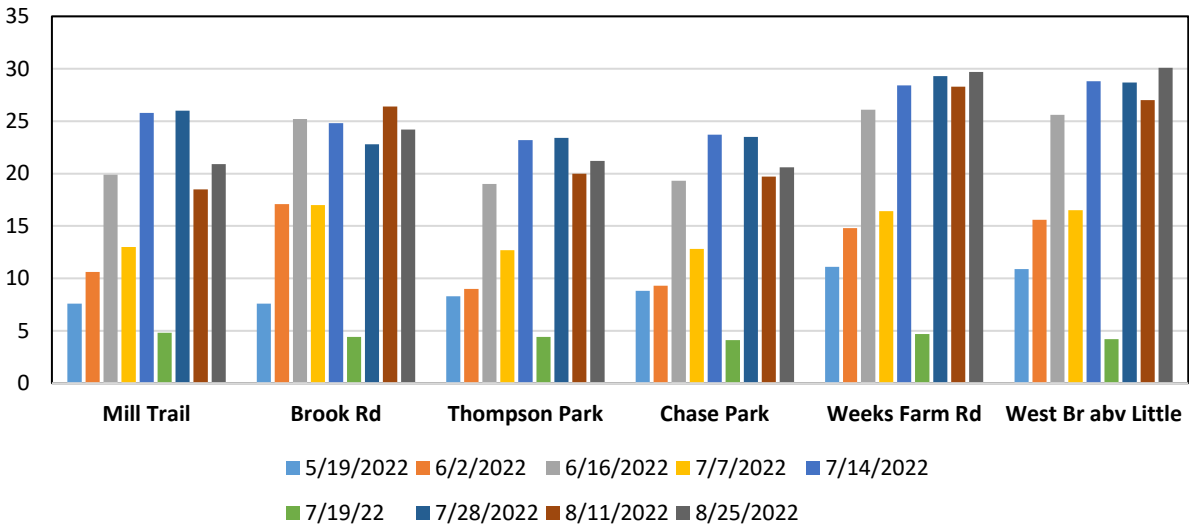
100



USGS 04288225 W BRANCH LITTLE R ABV BINGHAM FALLS NEAR STOWE, VT



West Branch Chloride Summer 2022

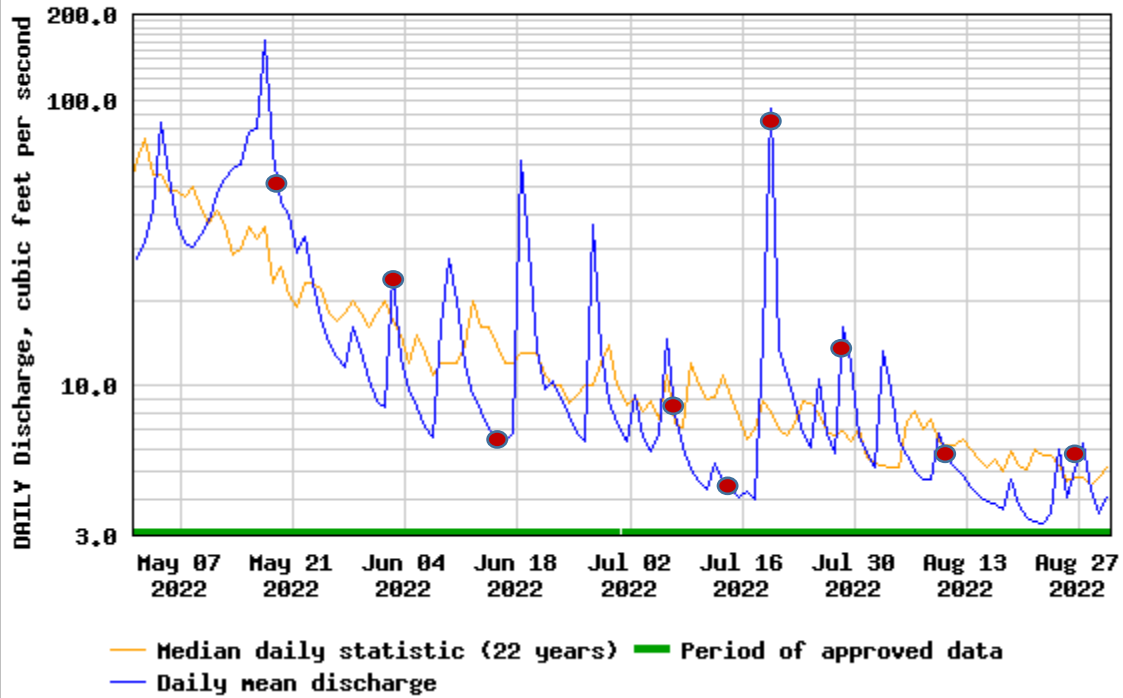


VT chloride standard: average < 260 mg/L

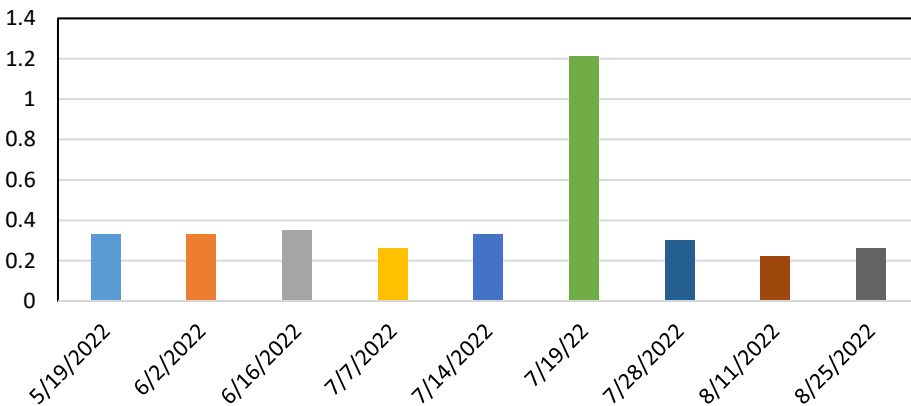
Pristine streams have chloride levels of 2 mg/L or less



USGS 04288225 W BRANCH LITTLE R ABV BINGHAM FALLS NEAR STOWE, VT



Total Nitrogen (mg/L) West Branch, Just Above the Little River Summer 2022

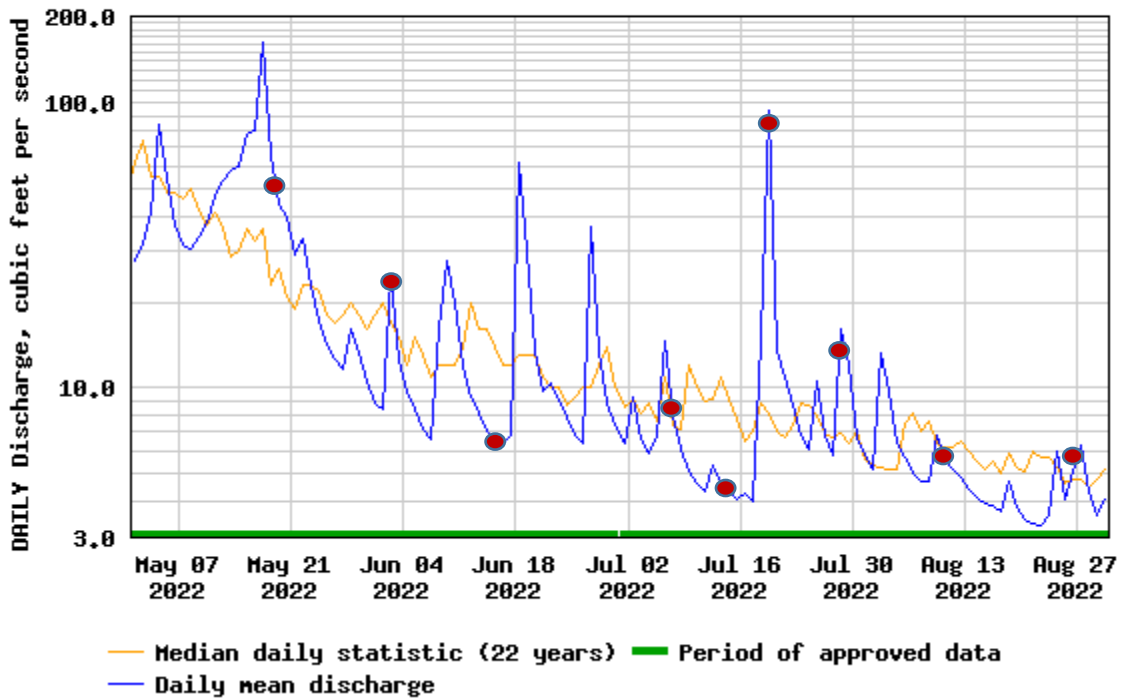


VT nitrogen standard: 5 mg/L at low flows (may be revised to a lower number).

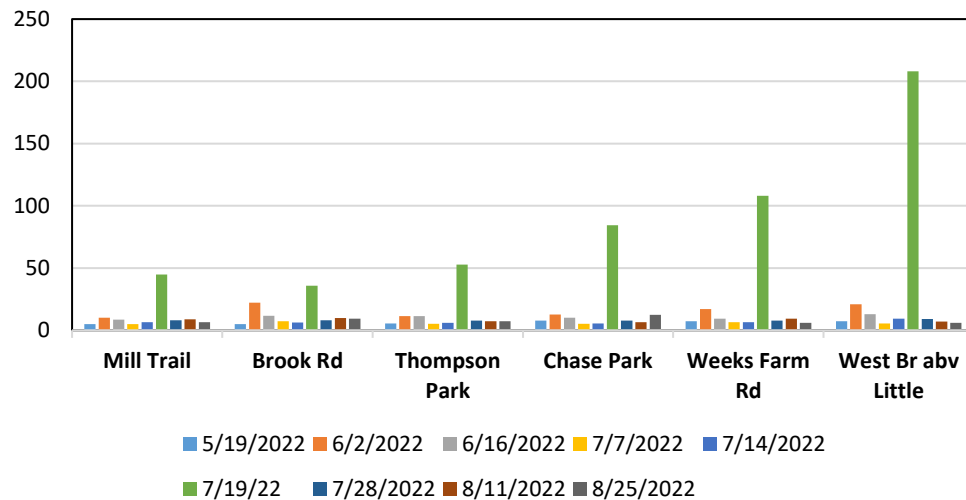
Levels over 1 mg/L are unusual.



USGS 04288225 W BRANCH LITTLE R ABV BINGHAM FALLS NEAR STOWE, VT



West Branch Total Phosphorus (ug/L) Summer 2022

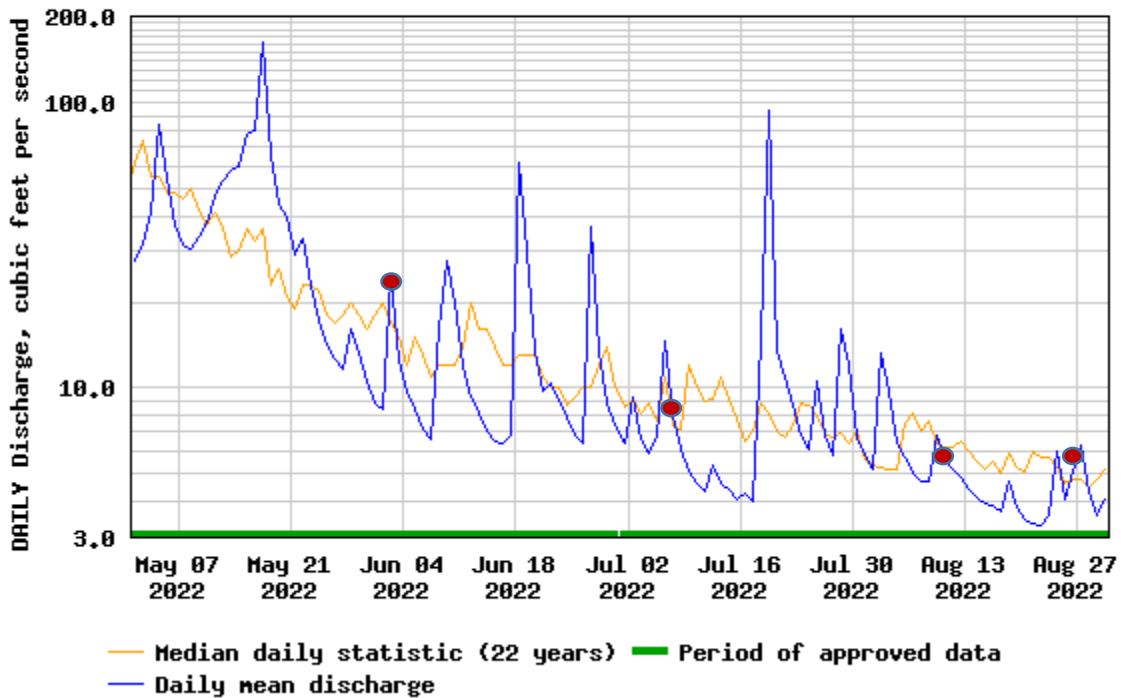


No specific standard for phosphorus. "Nutrient criteria" for warm, low-gradient streams is 27 ug/L Phosphorus for July - Oct low flows.

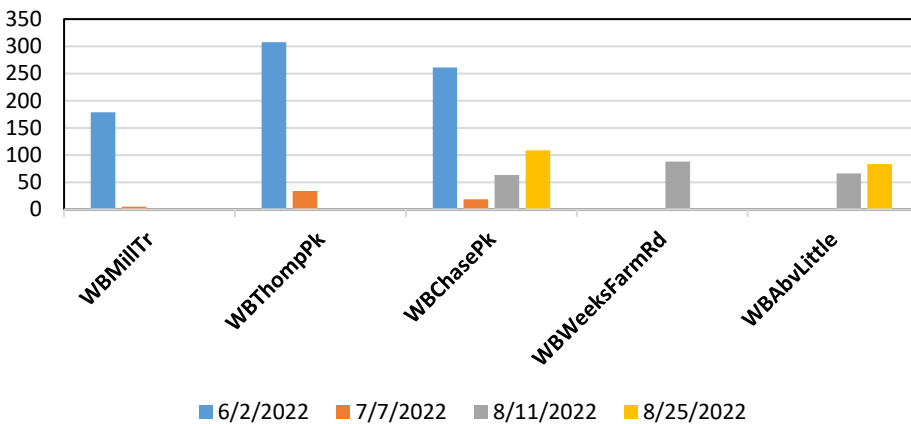
Target Phosphorus for the Main Lake of Lake Champlain is 10 ug/L



USGS 04288225 W BRANCH LITTLE R ABV BINGHAM FALLS NEAR STOWE, VT



West Branch *E. coli* (mpn/100mL) Summer 2022



E. coli is a bacteria found in the lower gut of warm-blooded animals. It is used as an indicator of fecal matter contamination and associated pathogenic bacteria and viruses, but is usually harmless itself.

mpn/100mL = "most probable number" per 100 milliliters – this has to do with the lab test used

VT Standard single sample= 235 mpn/ml , average low flow= 126 mpn/100mL